

## GPR149 RABBIT PAB

**Cat.#:** S215896

**Product Name:** Anti-GPR149 Rabbit Polyclonal Antibody

**Synonyms:** IEDA; PGR10

**UNIPROT ID:** Q86SP6 (Gene Accession - NP\_001033794 )

**Background:** Orphan receptor.

**Immunogen:** Synthetic peptide of human GPR149

**Applications:** ELISA, WB, IHC

**Recommended Dilutions:** IHC: 25-100;WB: 200-1000;ELISA: 5000-10000

**Host Species:** Rabbit

**Clonality:** Rabbit Polyclonal

**Isotype:** Immunogen-specific rabbit IgG

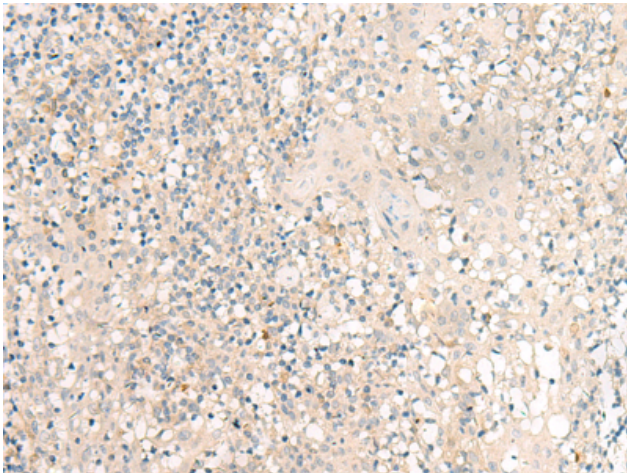
**Purification:** Antigen affinity purification

**Species Reactivity:** Human

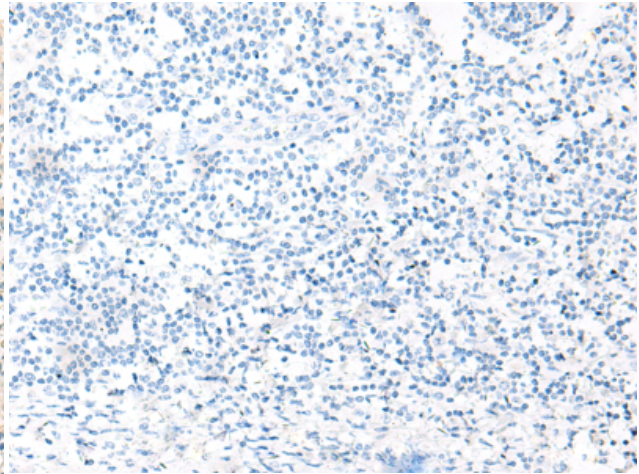
**Constituents:** PBS (without Mg<sup>2+</sup> and Ca<sup>2+</sup>), pH 7.4, 150 mM NaCl, 0.05% Sodium Azide and 40% glycerol

**Research Areas:** Signal Transduction

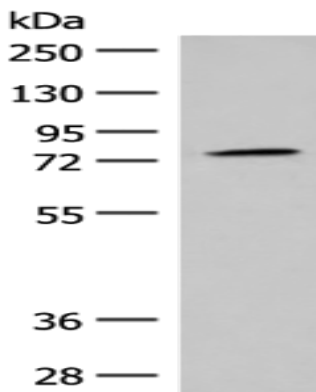
**Storage & Shipping:** Store at -20°C. Avoid repeated freezing and thawing



Immunohistochemistry analysis of paraffin embedded Human tonsil tissue using 215896(GPR149 Antibody) at a dilution of 1/30(Cytoplasm).



In comparison with the IHC on the left, the same paraffin-embedded Human tonsil tissue is first treated with the synthetic peptide and then with 215896(Anti-GPR149 Antibody) at dilution 1/30.



Gel: 8%SDS-PAGE, Lysate: 40  $\mu$ g;  
Lane: Human prostate tissue lysate;  
Primary antibody: 215896(GPR149 Antibody) at dilution 1/250;  
Secondary antibody: Goat anti rabbit IgG at 1/8000 dilution;  
Exposure time: 3 minutes