

GPR151 RABBIT PAB

Cat.#: S222095

Product Name: Anti-GPR151 Rabbit Polyclonal Antibody

Synonyms: GPCR; PGR7; GALR4; GALRL; GPCR-2037

UNIPROT ID: Q8TDV0 (Gene Accession - NP_919227)

Background: The protein encoded by this gene is similar to the galanin receptor subfamily of G protein-coupled receptors. The encoded protein is found predominantly in the central nervous system.

Immunogen: Synthetic peptide of human GPR151

Applications: ELISA, IHC

Recommended Dilutions: IHC: 30-150; ELISA: 5000-10000

Host Species: Rabbit

Clonality: Rabbit Polyclonal

Isotype: Immunogen-specific rabbit IgG

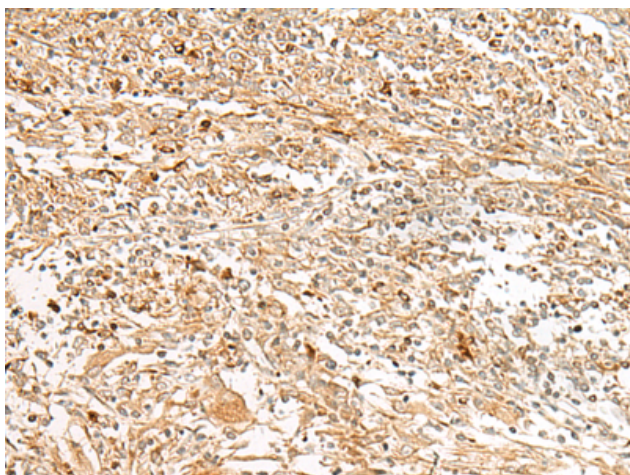
Purification: Antigen affinity purification

Species Reactivity: Human

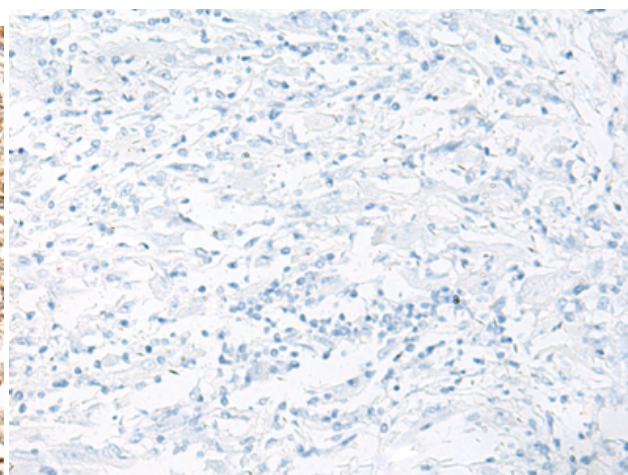
Constituents: PBS (without Mg²⁺ and Ca²⁺), pH 7.4, 150 mM NaCl, 0.05% Sodium Azide and 40% glycerol

Research Areas: Signal Transduction

Storage & Shipping: Store at -20°C. Avoid repeated freezing and thawing



Immunohistochemistry analysis of paraffin embedded Human liver cancer tissue using 222095(GPR151 Antibody) at a dilution of 1/30(Cell membrane).



In comparison with the IHC on the left, the same paraffin-embedded Human liver cancer tissue is first treated with the synthetic peptide and then with 222095(Anti-GPR151 Antibody) at dilution 1/30.