

## GPR160 RABBIT PAB

**Cat.#:** S222128

**Product Name:** Anti-GPR160 Rabbit Polyclonal Antibody

**Synonyms:** GPCR1; GPCR150

**UNIPROT ID:** Q9UJ42 (Gene Accession - NP\_055188 )

**Background:** Orphan receptor.

**Immunogen:** Synthetic peptide of human GPR160

**Applications:** ELISA, IHC

**Recommended Dilutions:** IHC: 30-150; ELISA: 5000-10000

**Host Species:** Rabbit

**Clonality:** Rabbit Polyclonal

**Isotype:** Immunogen-specific rabbit IgG

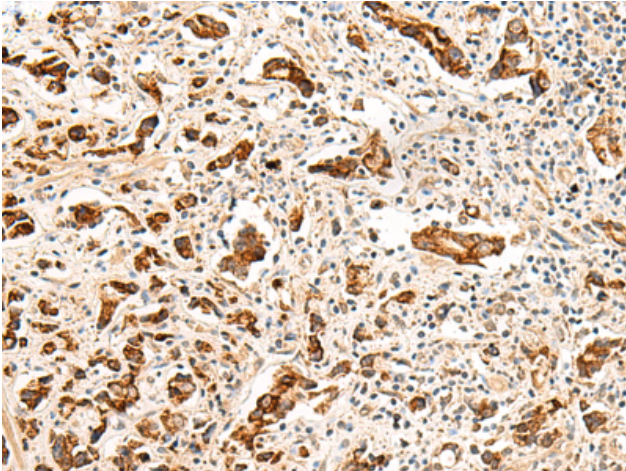
**Purification:** Antigen affinity purification

**Species Reactivity:** Human

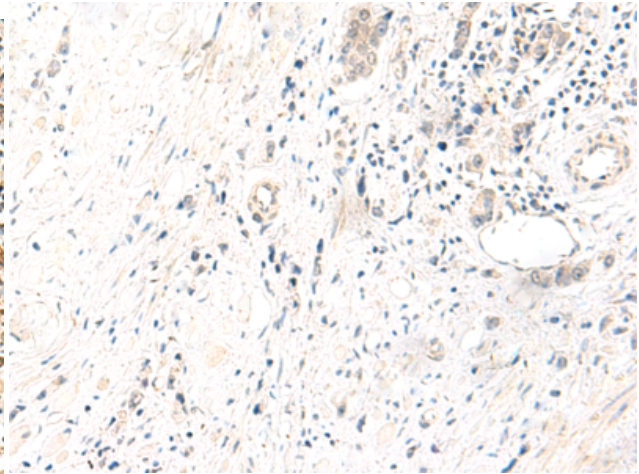
**Constituents:** PBS (without Mg<sup>2+</sup> and Ca<sup>2+</sup>), pH 7.4, 150 mM NaCl, 0.05% Sodium Azide and 40% glycerol

**Research Areas:** Signal Transduction

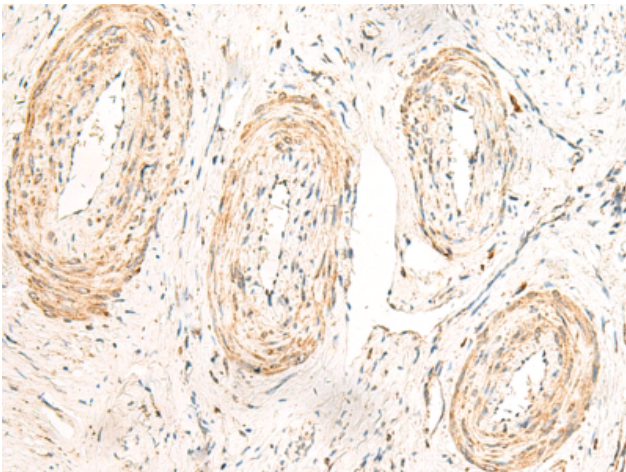
**Storage & Shipping:** Store at -20°C. Avoid repeated freezing and thawing



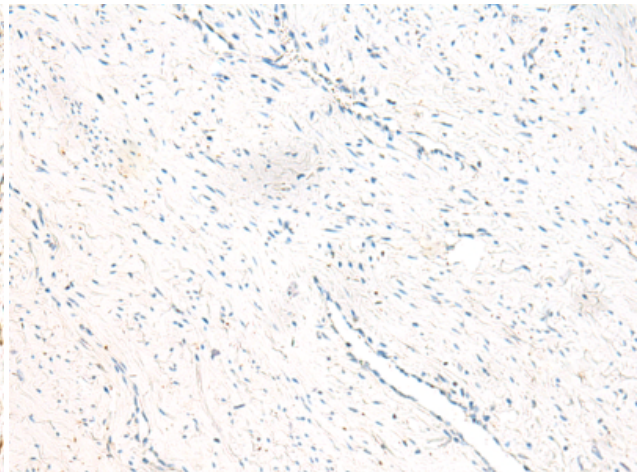
Immunohistochemistry analysis of paraffin embedded Human prostate cancer tissue using 222128(GPR160 Antibody) at a dilution of 1/35(Cell membrane and Cytoplasm).



In comparison with the IHC on the left, the same paraffin-embedded Human prostate cancer tissue is first treated with the synthetic peptide and then with 222128(Anti-GPR160 Antibody) at dilution 1/35.



The image on the left is immunohistochemistry of paraffin-embedded Human cervical cancer tissue using 222128(Anti-GPR160 Antibody) at a dilution of 1/35.



In comparison with the IHC on the left, the same paraffin-embedded Human cervical cancer tissue is first treated with synthetic peptide and then with D264094(Anti-GPR160 Antibody) at dilution 1/35.