

GPR32 RABBIT PAB

Cat.#: S222119

Product Name: Anti-GPR32 Rabbit Polyclonal Antibody

Synonyms: RVDRI

UNIPROT ID: O75388 (Gene Accession - NP_001497)

Background: This gene is intronless and encodes a member of the G-protein coupled receptor 1 family. The encoded protein binds to resolvins D1 and lipoxin A4 and has been linked to pulmonary inflammation. A related pseudogene has been identified on chromosome 19.

Immunogen: Synthetic peptide of human GPR32

Applications: ELISA, IHC

Recommended Dilutions: IHC: 20-100; ELISA: 500-1000

Host Species: Rabbit

Clonality: Rabbit Polyclonal

Isotype: Immunogen-specific rabbit IgG

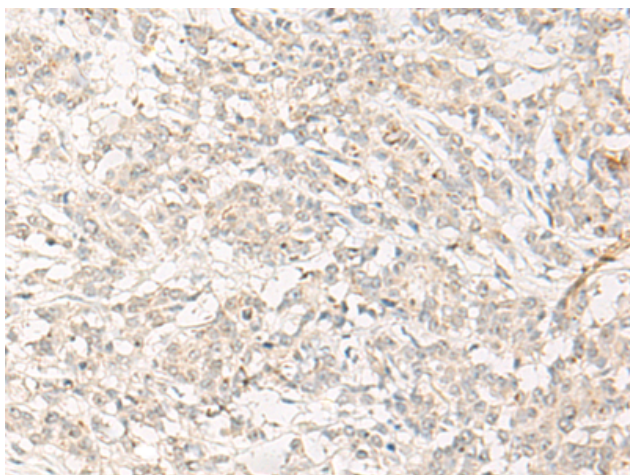
Purification: Antigen affinity purification

Species Reactivity: Human

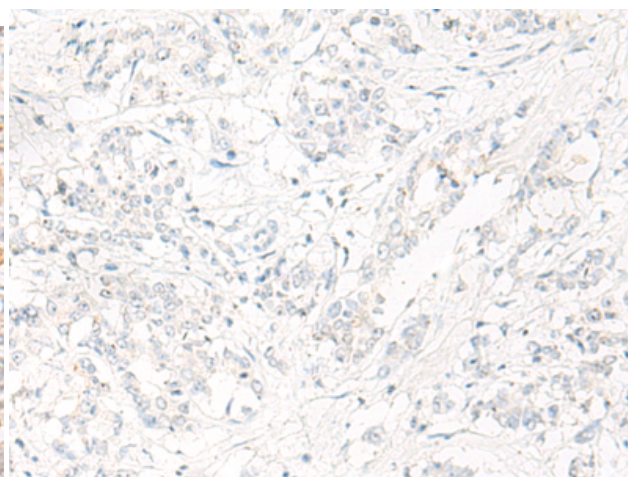
Constituents: PBS (without Mg²⁺ and Ca²⁺), pH 7.4, 150 mM NaCl, 0.05% Sodium Azide and 40% glycerol

Research Areas: Signal Transduction

Storage & Shipping: Store at -20°C. Avoid repeated freezing and thawing



Immunohistochemistry analysis of paraffin embedded Human colorectal cancer tissue using 222119 (GPR32 Antibody) at a dilution of 1/20 (Cell membrane).



In comparison with the IHC on the left, the same paraffin-embedded Human colorectal cancer tissue is first treated with the synthetic peptide and then with 222119 (Anti-GPR32 Antibody) at dilution 1/20.