

GPR75 RABBIT PAB

Cat.#: N225425

Product Name: Anti-GPR75 Rabbit pAb

Synonyms: Probable G-protein coupled receptor 75

UNIPROT ID: O95800

Background: G protein-coupled receptor that is activated by the chemokine CCL5/RANTES.

Immunogen: The antiserum was produced against synthesized peptide derived from human GPR75. AA range:381-430

Applications: WB,ICC/IF,ELISA

Recommended Dilutions: WB: 1/500-1/1000 IF: 1/50-1/200 ELISA: 1/10000

Host Species: Rabbit

Clonality: Rabbit Polyclonal

Clone ID: -

MW: Calculated MW: 59 kDa; Observed MW: 59 kDa

Isotype: IgG

Purification: Affinity Purified

Species Reactivity: Human,Mouse

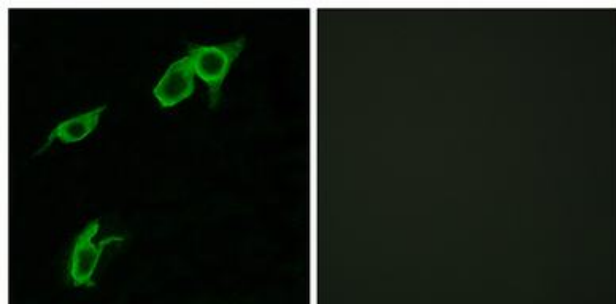
Conjugation: Unconjugated

Modification: Unmodified

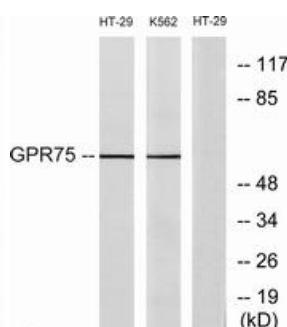
Constituents: PBS (without Mg²⁺ and Ca²⁺), pH 7.3 containing 50% glycerol, 0.5% BSA and 0.02% sodium azide

Research Areas: Signal Transduction

Storage & Shipping: Store at -20°C. Avoid repeated freezing and thawing



Immunofluorescence analysis of GPR75 in LOVO using GPR75 antibody. The picture on the right is blocked using the synthesized peptide.



Western blot analysis of GPR75 in HT-29 and K562 lysates using GPR75 antibody. The lane on the right is blocked with the synthesized peptide.