

## GPR75 RABBIT PAB

**Cat.#:** S222125

**Product Name:** Anti-GPR75 Rabbit Polyclonal Antibody

**Synonyms:** GPRchr2; WI31133

**UNIPROT ID:** O95800 (Gene Accession - NP\_006785 )

**Background:** GPR75 is a member of the G protein-coupled receptor family. GPRs are cell surface receptors that activate guanine-nucleotide binding proteins upon the binding of a ligand.

**Immunogen:** Synthetic peptide of human GPR75

**Applications:** ELISA, IHC

**Recommended Dilutions:** IHC: 50-300; ELISA: 5000-10000

**Host Species:** Rabbit

**Clonality:** Rabbit Polyclonal

**Isotype:** Immunogen-specific rabbit IgG

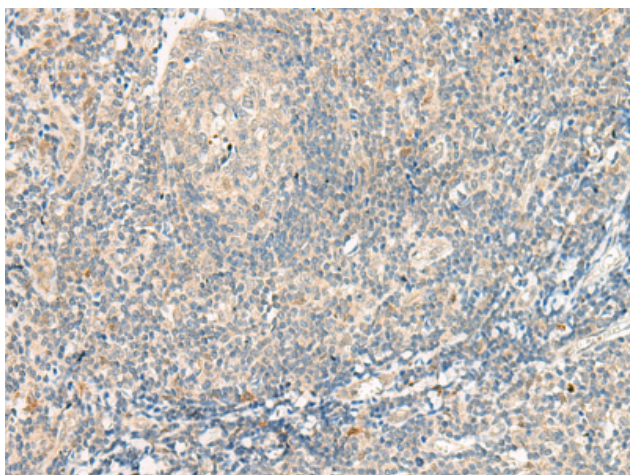
**Purification:** Antigen affinity purification

**Species Reactivity:** Human, Mouse

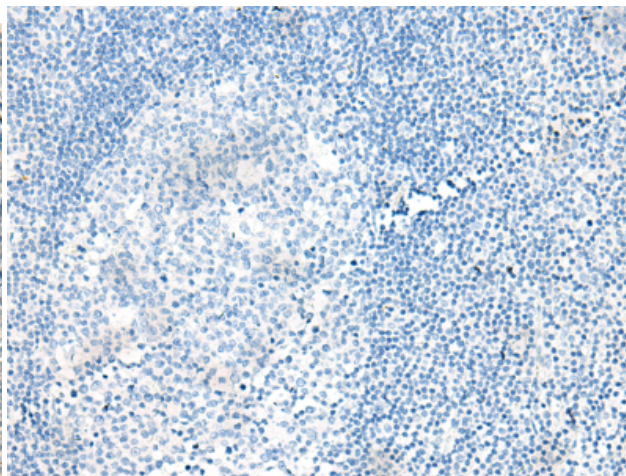
**Constituents:** PBS (without Mg<sup>2+</sup> and Ca<sup>2+</sup>), pH 7.4, 150 mM NaCl, 0.05% Sodium Azide and 40% glycerol

**Research Areas:** Signal Transduction

**Storage & Shipping:** Store at -20°C. Avoid repeated freezing and thawing



Immunohistochemistry analysis of paraffin embedded Human tonsil tissue using 222125(GPR75 Antibody) at a dilution of 1/95(Cell membrane).



In comparison with the IHC on the left, the same paraffin-embedded Human tonsil tissue is first treated with the synthetic peptide and then with 222125(Anti-GPR75 Antibody) at dilution 1/95.