

## GPR89A/GPR89B RABBIT PAB

**Cat.#:** S222140

**Product Name:** Anti-GPR89A/GPR89B Rabbit Polyclonal Antibody

**Synonyms:** GPHR; GPR89; SH120; GPR89B; GPR89C; UNQ192

**UNIPROT ID:** B7ZAQ6/P0CG08 (Gene Accession - NP\_057418 )

**Background:** GPR89A is a nearly identical copy of the GPR89B gene (MIM 612806). Voltage dependent anion channel required for acidification and functions of the Golgi apparatus that may function in counter-ion conductance.

**Immunogen:** Synthetic peptide of human GPR89A/GPR89B

**Applications:** ELISA, WB, IHC

**Recommended Dilutions:** IHC: 20-100;WB: 200-1000;ELISA: 5000-10000

**Host Species:** Rabbit

**Clonality:** Rabbit Polyclonal

**Isotype:** Immunogen-specific rabbit IgG

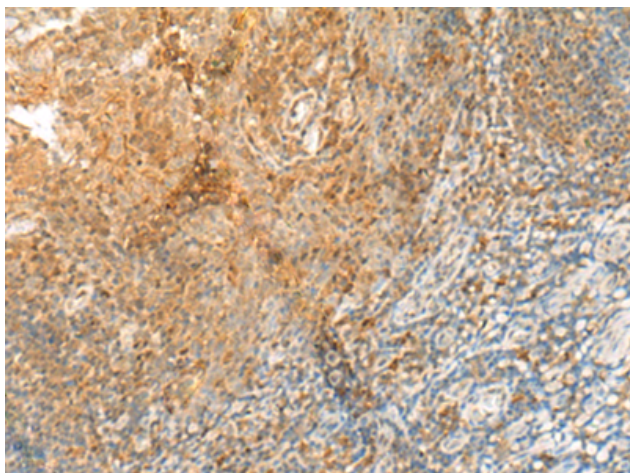
**Purification:** Antigen affinity purification

**Species Reactivity:** Human, Mouse

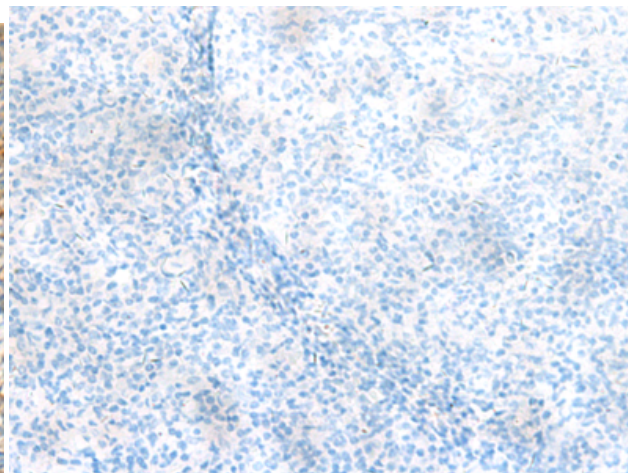
**Constituents:** PBS (without Mg<sup>2+</sup> and Ca<sup>2+</sup>), pH 7.4, 150 mM NaCl, 0.05% Sodium Azide and 40% glycerol

**Research Areas:** Signal Transduction

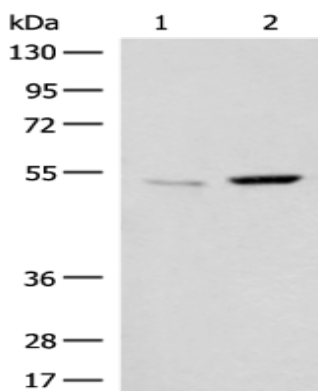
**Storage & Shipping:** Store at -20°C. Avoid repeated freezing and thawing



Immunohistochemistry analysis of paraffin embedded Human tonsil tissue using 222140(GPR89A/GPR89B Antibody) at a dilution of 1/30(Cell membrane).



In comparison with the IHC on the left, the same paraffin-embedded Human tonsil tissue is first treated with the synthetic peptide and then with 222140(Anti-GPR89A/GPR89B Antibody) at dilution 1/30.



Gel: 8%SDS-PAGE, Lysate: 40  $\mu$ g;  
 Lane 1-2: Mouse kidney tissue and Human heart tissue lysates;  
 Primary antibody: 222140(GPR89A/GPR89B Antibody) at dilution 1/300;  
 Secondary antibody: Goat anti rabbit IgG at 1/8000 dilution;  
 Exposure time: 1 minute