

GPRC5B RABBIT MAB

Cat.#: N262302

Product Name: Anti-GPRC5B Rabbit Monoclonal Antibody

Synonyms: RAIG2; RAIG-2

UNIPROT ID: Q9NZH0

Background: G-protein coupled receptor family C group 5 member B

Immunogen: A synthetic peptide of human GPRC5B

Applications: WB,IP

Recommended Dilutions: WB: 1/500-1/1000 IP: 1/20

Host Species: Rabbit

Clonality: Rabbit Monoclonal

Clone ID: R03-6B6

MW: Calculated MW: 45 kDa; Observed MW: 45 kDa

Isotype: IgG

Purification: Affinity Purified

Species Reactivity: Human,Mouse,Rat

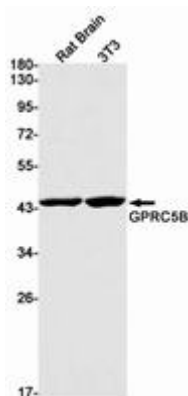
Conjugation: Unconjugated

Modification: Unmodified

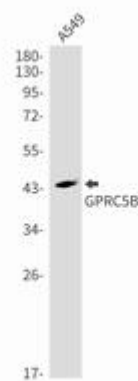
Constituents: PBS (without Mg²⁺ and Ca²⁺), pH 7.3 containing 50% glycerol, 0.5% BSA and 0.02% sodium azide

Research Areas: Neuroscience

Storage & Shipping: Store at -20°C. Avoid repeated freezing and thawing



Western blot analysis of GPRC5B in rat Brain, 3T3 lysates using GPRC5B antibody.



Western blot analysis of GPRC5B in A549 lysates using GPRC5B antibody.



Product Description

Pioneering GTPase and Oncogene Product Development since 2010
