

GRAMD2A RABBIT PAB

Cat.#: S215915

Product Name: Anti-GRAMD2A Rabbit Polyclonal Antibody

Synonyms: GRAMD2

UNIPROT ID: Q8IU3 (Gene Accession - NP_001012660)

Background: Participates in the organization of endoplasmic reticulum-plasma membrane contact sites (EPCS) with pleiotropic functions including STIM1 recruitment and calcium homeostasis. Constitutive tether that co-localize with ESYT2/3 tethers at endoplasmic reticulum-plasma membrane contact sites in a phosphatidylinositol lipid-dependent manner. Pre-marks the subset of phosphatidylinositol 4,5-bisphosphate (PI(4,5)P₂)-enriched EPCS destined for the store operated calcium entry pathway (SOCE).

Immunogen: Synthetic peptide of human GRAMD2A

Applications: ELISA, IHC

Recommended Dilutions: IHC: 25-50; ELISA: 5000-10000

Host Species: Rabbit

Clonality: Rabbit Polyclonal

Isotype: Immunogen-specific rabbit IgG

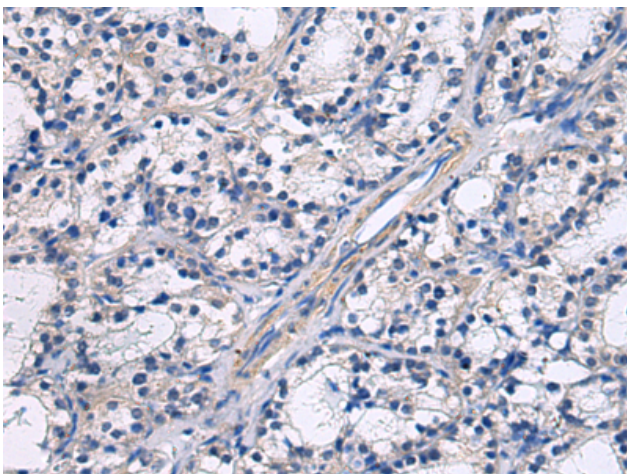
Purification: Antigen affinity purification

Species Reactivity: Human

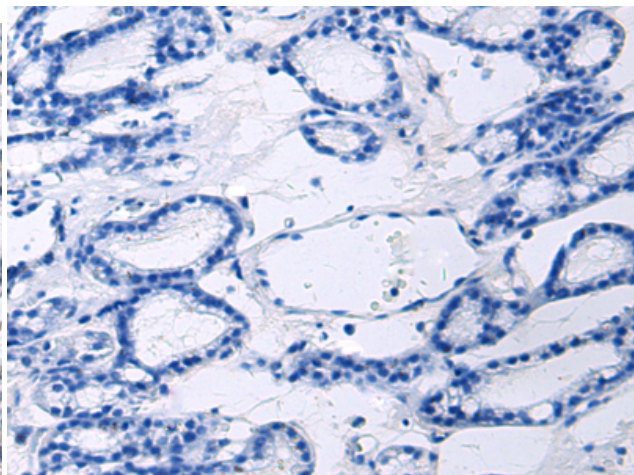
Constituents: PBS (without Mg²⁺ and Ca²⁺), pH 7.4, 150 mM NaCl, 0.05% Sodium Azide and 40% glycerol

Research Areas: Cell Biology

Storage & Shipping: Store at -20°C. Avoid repeated freezing and thawing



Immunohistochemistry analysis of paraffin embedded Human thyroid cancer using 215915 (GRAMD2A Antibody) at a dilution of 1/45 (Cytoplasm).



In comparison with the IHC on the left, the same paraffin-embedded Human thyroid cancer is first treated with the synthetic peptide and then with 215915 (Anti-GRAMD2A Antibody) at dilution 1/45.