

GRANZYME B RABBIT PAB

Cat.#: N225242

Product Name: Anti-Granzyme B Rabbit pAb

Synonyms: Granzyme B; Cathepsin G-like 1; CTSGLI; Lymphocyte protease; Fragmentin-2; Granzyme-2; Human lymphocyte protein; SECT; GZMB; CGLI; CSPB; CTLA1; GRB

UNIPROT ID: P10144

Background: This enzyme is necessary for target cell lysis in cell-mediated immune responses. It cleaves after Asp. Seems to be linked to an activation cascade of caspases (aspartate-specific cysteine proteases) responsible for apoptosis execution. Cleaves caspase-3, -7, -9 and 10 to give rise to active enzymes mediating apoptosis.

Immunogen: Synthesized peptide derived from human Granzyme B Polyclonal

Applications: WB,IHC-P,ELISA

Recommended Dilutions: WB: 1/500-1/1000 IHC: 1/50-1/100 ELISA: 1/10000

Host Species: Rabbit

Clonality: Rabbit Polyclonal

Clone ID: -

MW: Calculated MW: 28 kDa; Observed MW: 40 kDa

Isotype: IgG

Purification: Affinity Purified

Species Reactivity: Human,Mouse,Rat

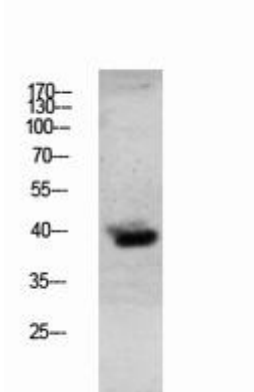
Conjugation: Unconjugated

Modification: Unmodified

Constituents: PBS (without Mg²⁺ and Ca²⁺), pH 7.3 containing 50% glycerol, 0.5% BSA and 0.02% sodium azide

Research Areas: Cell Biology

Storage & Shipping: Store at -20°C. Avoid repeated freezing and thawing



Western blot analysis of Granzyme B in mouse lung lysates using Granzyme B antibody.