

## GRHPR RABBIT PAB

**Cat.#:** S222144

**Product Name:** Anti-GRHPR Rabbit Polyclonal Antibody

**Synonyms:** PH2; GLXR; GLYD

**UNIPROT ID:** Q9UBQ7 (Gene Accession - NP\_036335 )

**Background:** This gene encodes an enzyme with hydroxypyruvate reductase, glyoxylate reductase, and D-glycerate dehydrogenase enzymatic activities. The enzyme has widespread tissue expression and has a role in metabolism. Type II hyperoxaluria is caused by mutations in this gene.

**Immunogen:** Synthetic peptide of human GRHPR

**Applications:** ELISA, WB, IHC

**Recommended Dilutions:** IHC: 25-100;WB: 500-2000;ELISA: 5000-10000

**Host Species:** Rabbit

**Clonality:** Rabbit Polyclonal

**Isotype:** Immunogen-specific rabbit IgG

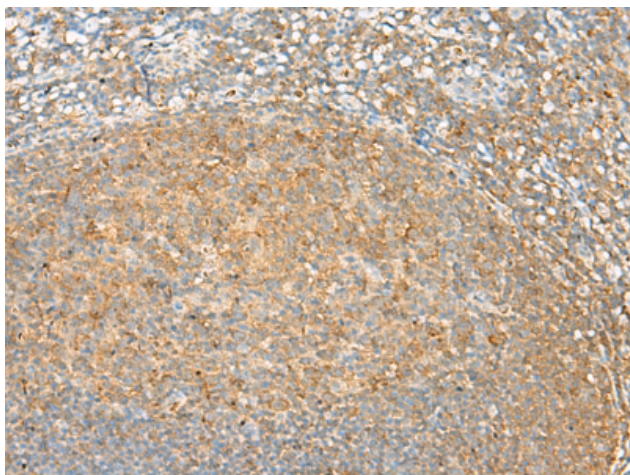
**Purification:** Antigen affinity purification

**Species Reactivity:** Human, Mouse

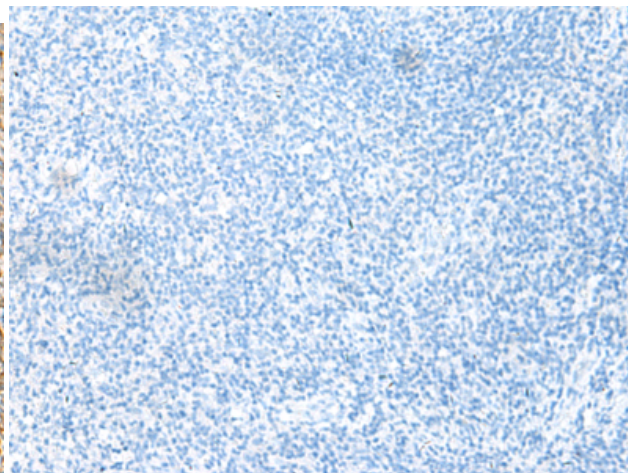
**Constituents:** PBS (without Mg<sup>2+</sup> and Ca<sup>2+</sup>), pH 7.4, 150 mM NaCl, 0.05% Sodium Azide and 40% glycerol

**Research Areas:** Metabolism

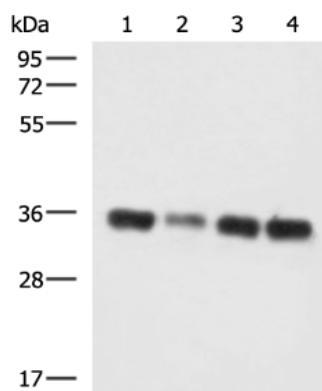
**Storage & Shipping:** Store at -20°C. Avoid repeated freezing and thawing



Immunohistochemistry analysis of paraffin embedded Human tonsil tissue using 222144 (GRHPR Antibody) at a dilution of 1/30 (Cell membrane).



In comparison with the IHC on the left, the same paraffin-embedded Human tonsil tissue is first treated with the synthetic peptide and then with 222144 (Anti-GRHPR Antibody) at dilution 1/30.



Gel: 8% SDS-PAGE, Lysate: 40  $\mu$ g;  
Lane 1-4: LO2, HepG2, 231, 293T cell lysates;  
Primary antibody: 222144 (GRHPR Antibody) at dilution 1/750;  
Secondary antibody: HRP-conjugated Goat anti rabbit IgG at 1/5000 dilution;  
Exposure time: 3 minutes