

## GRIA2 RABBIT PAB

**Cat.#:** S219956

**Product Name:** Anti-GRIA2 Rabbit Polyclonal Antibody

**Synonyms:** GLUR2, GLURB, GluA2, HBGR2, GluR-K2

**UNIPROT ID:** P42262 (Gene Accession - NP\_000817 )

**Background:** Glutamate receptors are the predominant excitatory neurotransmitter receptors in the mammalian brain and are activated in a variety of normal neurophysiologic processes. This gene product belongs to a family of glutamate receptors that are sensitive to alpha-amino-3-hydroxy-5-methyl-4-isoxazole propionate (AMPA), and function as ligand-activated cation channels. These channels are assembled from 4 related subunits, GRIA1-4. The subunit encoded by this gene (GRIA2) is subject to RNA editing (CAG->CGG; Q->R) within the second transmembrane domain, which is thought to render the channel impermeable to Ca<sup>2+</sup>. Human and animal studies suggest that pre-mRNA editing is essential for brain function, and defective GRIA2 RNA editing at the Q/R site may be relevant to amyotrophic lateral sclerosis (ALS) etiology. Alternative splicing, resulting in transcript variants encoding different isoforms, (including the flip and flop isoforms that vary in their signal transduction properties), has been noted for this gene.

**Immunogen:** Synthetic peptide of human GRIA2

**Applications:** ELISA, IHC

**Recommended Dilutions:** IHC: 100-300; ELISA: 2000-10000

**Host Species:** Rabbit

**Clonality:** Rabbit Polyclonal

**Isotype:** Immunogen-specific rabbit IgG

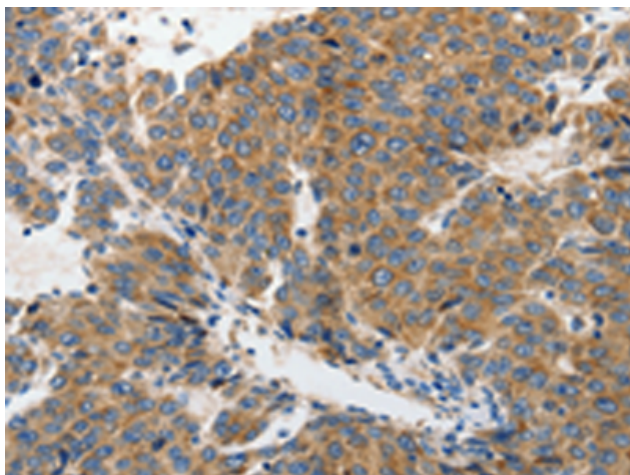
**Purification:** Antigen affinity purification

**Species Reactivity:** Human, Mouse, Rat

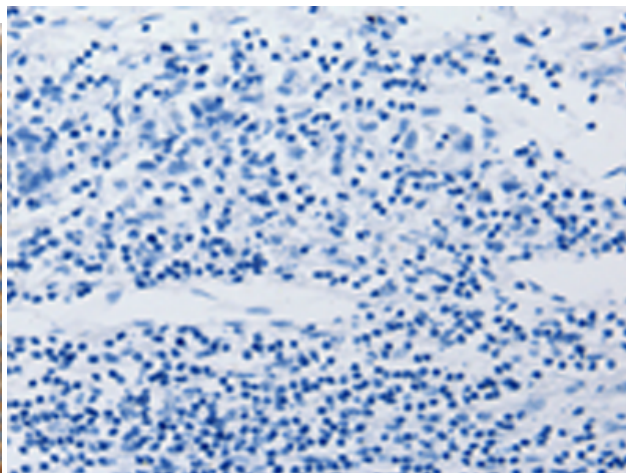
**Constituents:** PBS (without Mg<sup>2+</sup> and Ca<sup>2+</sup>), pH 7.4, 150 mM NaCl, 0.05% Sodium Azide and 40% glycerol

**Research Areas:** Neuroscience

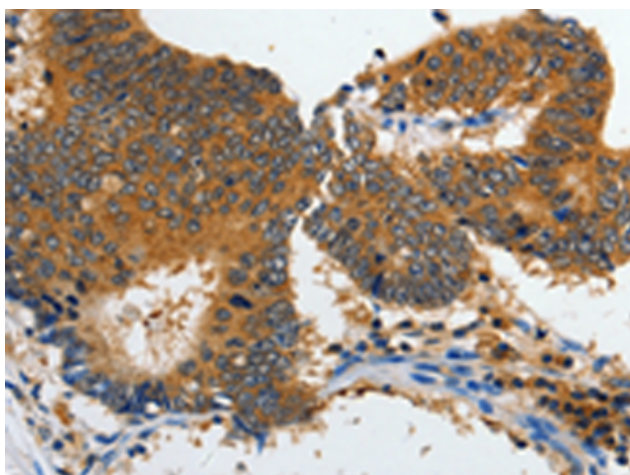
**Storage & Shipping:** Store at -20°C. Avoid repeated freezing and thawing



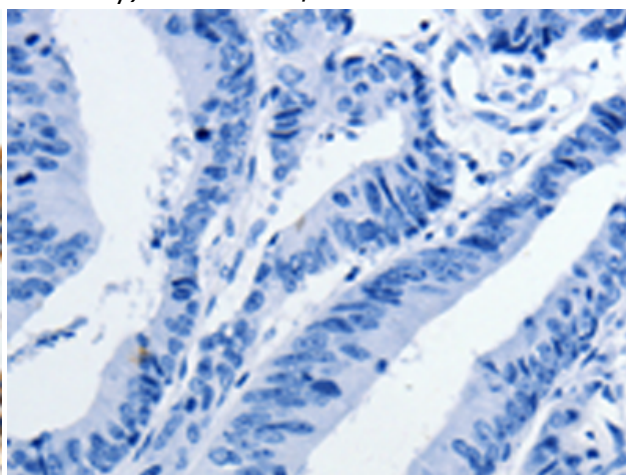
Immunohistochemistry analysis of paraffin embedded Human liver cancer tissue using 219956 (GRIA2 Antibody) at a dilution of 1/70 (Cytoplasm).



In comparison with the IHC on the left, the same paraffin-embedded Human liver cancer tissue is first treated with the synthetic peptide and then with 219956 (Anti-GRIA2 Antibody) at dilution 1/70.



The image on the left is immunohistochemistry of paraffin-embedded Human colon cancer tissue using 219956 (Anti-GRIA2 Antibody) at a dilution of 1/70.



In comparison with the IHC on the left, the same paraffin-embedded Human colon cancer tissue is first treated with synthetic peptide and then with D260678 (Anti-GRIA2 Antibody) at dilution 1/70.