

## GRK2 RABBIT MAB

**Cat.#:** N263350

**Product Name:** Anti-GRK2 Rabbit Monoclonal Antibody

**Synonyms:** GRK2; BARK1; FLJ16718; BETA-ARK1; ADRBK1

**UNIPROT ID:** P25098

**Background:** GRK2 kinase activity and cellular localization are tightly regulated by interactions with activated receptors, G-beta and G-gamma subunits, adaptor proteins, phospholipids, caveolin and calmodulin, as well as by phosphorylation. PKC phosphorylation enhances GRK2 activity by promoting its membrane localization and by abolishing the inhibitory association of calmodulin.

**Immunogen:** A synthetic peptide of human GRK2

**Applications:** WB,IP

**Recommended Dilutions:** WB: 1/500-1/1000 IP: 1/20

**Host Species:** Rabbit

**Clonality:** Rabbit Monoclonal

**Clone ID:** R01-615

**MW:** Calculated MW: 80 kDa; Observed MW: 80 kDa

**Isotype:** IgG

**Purification:** Affinity Purified

**Species Reactivity:** Human

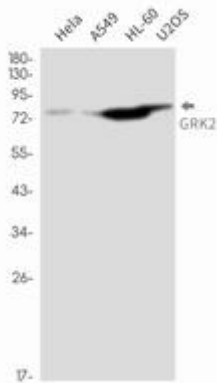
**Conjugation:** Unconjugated

**Modification:** Unmodified

**Constituents:** PBS (without Mg<sup>2+</sup> and Ca<sup>2+</sup>), pH 7.3 containing 50% glycerol, 0.5% BSA and 0.02% sodium azide

**Research Areas:** Neuroscience

**Storage & Shipping:** Store at -20°C. Avoid repeated freezing and thawing



Western blot analysis of GRK2 in HeLa, A549, HL-60, U2OS lysates using GRK2 antibody.