

## GRK2 RABBIT PAB

**Cat.#:** S219837

**Product Name:** Anti-GRK2 Rabbit Polyclonal Antibody

**Synonyms:** BARK1; ADRBK1; BETA-ARK1

**UNIPROT ID:** P25098 (Gene Accession - NP\_001610 )

**Background:** This gene encodes a member of the G protein-coupled receptor kinase family of proteins. The encoded protein phosphorylates the beta-adrenergic receptor as well as a wide range of other substrates including non-GPCR cell surface receptors, and cytoskeletal, mitochondrial, and transcription factor proteins. Data from rodent models supports a role for this gene in embryonic development, heart function and metabolism. Elevated expression of this gene has been observed in human patients with heart failure and Alzheimer's disease.

**Immunogen:** Synthetic peptide of human GRK2

**Applications:** ELISA, IHC

**Recommended Dilutions:** IHC: 100-300; ELISA: 1000-10000

**Host Species:** Rabbit

**Clonality:** Rabbit Polyclonal

**Isotype:** Immunogen-specific rabbit IgG

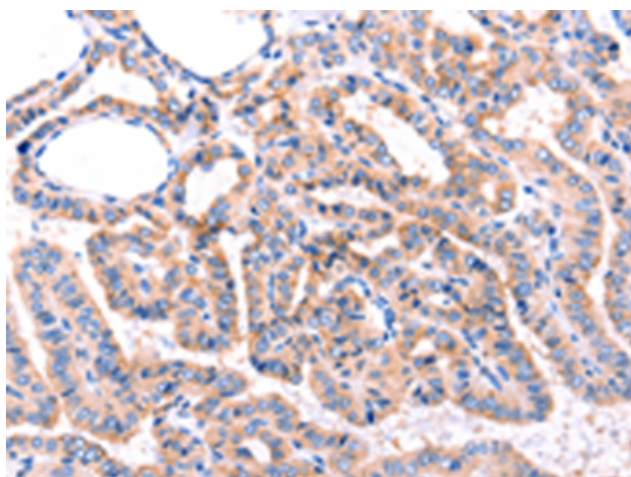
**Purification:** Antigen affinity purification

**Species Reactivity:** Human, Mouse, Rat

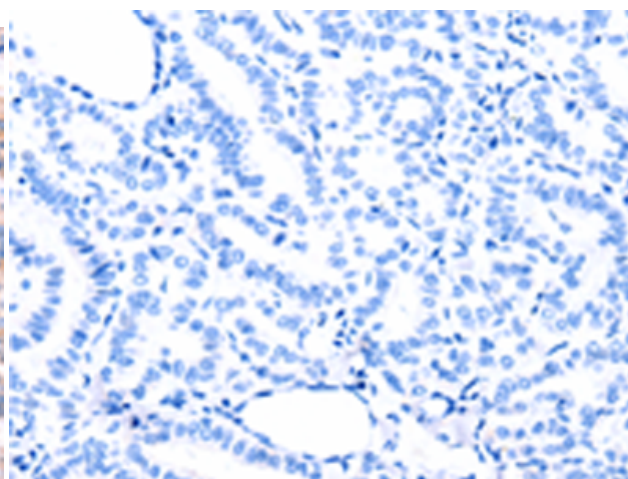
**Constituents:** PBS (without Mg<sup>2+</sup> and Ca<sup>2+</sup>), pH 7.4, 150 mM NaCl, 0.05% Sodium Azide and 40% glycerol

**Research Areas:** Signal Transduction, Neuroscience

**Storage & Shipping:** Store at -20°C. Avoid repeated freezing and thawing



Immunohistochemistry analysis of paraffin embedded Human thyroid cancer tissue using 219837(GRK2 Antibody) at a dilution of 1/87(Cytoplasm).



In comparison with the IHC on the left, the same paraffin-embedded Human thyroid cancer tissue is first treated with the synthetic peptide and then with 219837(Anti-GRK2 Antibody) at dilution 1/87.