

GRM5 RABBIT PAB

Cat.#: S221277

Product Name: Anti-GRM5 Rabbit Polyclonal Antibody

Synonyms: mGlu5; GPRC1E; MGLUR5; PPP1R86

UNIPROT ID: P41594 (Gene Accession - NP_000833)

Background: This gene encodes a member of the G-protein coupled receptor 3 protein family. The encoded protein is a metabotropic glutamate receptor, whose signaling activates a phosphatidylinositol-calcium second messenger system. This protein may be involved in the regulation of neural network activity and synaptic plasticity. Glutamatergic neurotransmission is involved in most aspects of normal brain function and can be perturbed in many neuropathologic conditions. A pseudogene of this gene has been defined on chromosome 11. Alternative splicing results in multiple transcript variants.

Immunogen: Synthetic peptide of human GRM5

Applications: ELISA, IHC

Recommended Dilutions: IHC: 50-200; ELISA: 5000-10000

Host Species: Rabbit

Clonality: Rabbit Polyclonal

Isotype: Immunogen-specific rabbit IgG

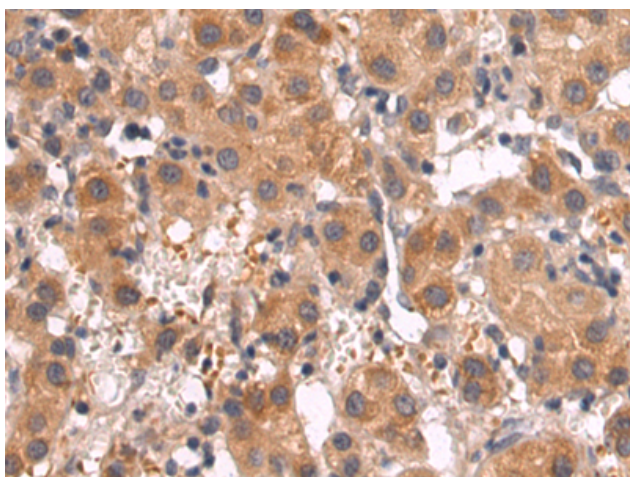
Purification: Antigen affinity purification

Species Reactivity: Human, Mouse, Rat

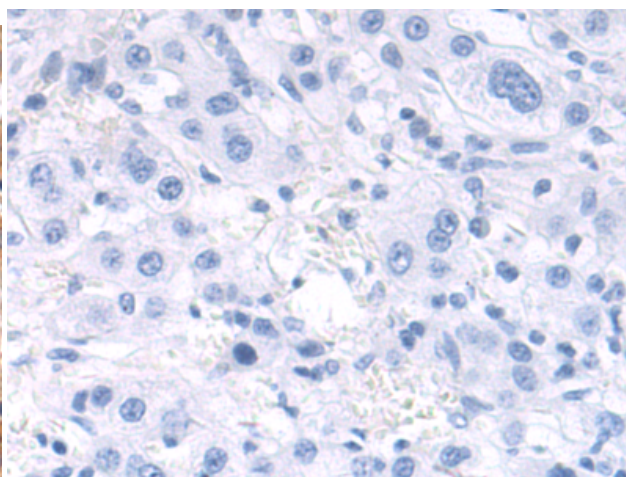
Constituents: PBS (without Mg²⁺ and Ca²⁺), pH 7.4, 150 mM NaCl, 0.05% Sodium Azide and 40% glycerol

Research Areas: Signal Transduction, Neuroscience

Storage & Shipping: Store at -20°C. Avoid repeated freezing and thawing



Immunohistochemistry analysis of paraffin embedded Human liver cancer tissue using 221277(GRM5 Antibody) at a dilution of 1/60(Cell membrane).



In comparison with the IHC on the left, the same paraffin-embedded Human liver cancer tissue is first treated with the synthetic peptide and then with 221277(Anti-GRM5 Antibody) at dilution 1/60.