

## GRO GAMMA RABBIT PAB

**Cat.#:** N225220

**Product Name:** Anti-GRO gamma Rabbit pAb

**Synonyms:** CXCL3; GRO3; GROG; SCYB3; C-X-C motif chemokine 3; GRO-gamma(1-73); Growth-regulated protein gamma; GRO-gamma; Macrophage inflammatory protein 2-beta; MIP2-beta

**UNIPROT ID:** P19876

**Background:** Chemokine (C-X-C motif) ligand 3 (CXCL3) is a small cytokine belonging to the CXC chemokine family that is also known as GRO3 oncogene (GRO3), GRO protein gamma (GROg) and macrophage inflammatory protein-2-beta (MIP2b). CXCL3 controls migration and adhesion of monocytes and mediates its effects on its target cell by interacting with a cell surface chemokine receptor called CXCR2. More recently, it has been shown that Cxcl3 regulates cell autonomously the migration of the precursors of cerebellar granule neurons toward the internal layers of cerebellum, during the morphogenesis of cerebellum.

**Immunogen:** The antiserum was produced against synthesized peptide derived from the C-terminal region of human CXCL3. AA range:58-107

**Applications:** IHC-P,ELISA

**Recommended Dilutions:** IHC: 1/50-1/100 ELISA: 1/10000

**Host Species:** Rabbit

**Clonality:** Rabbit Polyclonal

**Clone ID:** -

**MW:** -

**Isotype:** IgG

**Purification:** Affinity Purified

**Species Reactivity:** Human

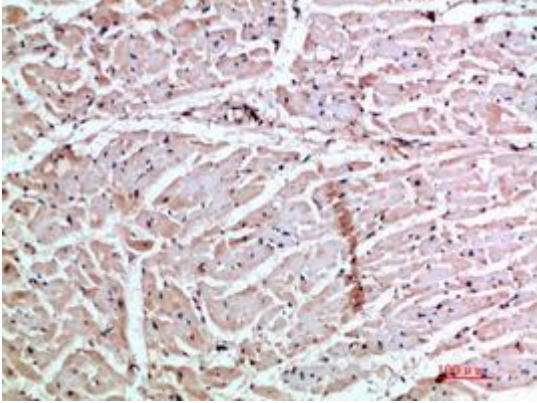
**Conjugation:** Unconjugated

**Modification:** Unmodified

**Constituents:** PBS (without Mg<sup>2+</sup> and Ca<sup>2+</sup>), pH 7.3 containing 50% glycerol, 0.5% BSA and 0.02% sodium azide

**Research Areas:** Cardiovascular

**Storage & Shipping:** Store at -20°C. Avoid repeated freezing and thawing



Immunohistochemistry analysis of paraffin-embedded Human heart using GRO gamma antibody. High-pressure and temperature Sodium Citrate pH 6.0 was used for antigen retrieval.