

GROWTH HORMONE RECEPTOR RABBIT MAB

Cat.#: N262303

Product Name: Anti-Growth Hormone Receptor Rabbit Monoclonal Antibody

Synonyms: GHR; Growth hormone receptor; GH receptor; Somatotropin receptor

UNIPROT ID: P10912

Background: Receptor for pituitary gland growth hormone involved in regulating postnatal body growth. On ligand binding, couples to the JAK2/STAT5 pathway. The soluble form (GHBP) acts as a reservoir of growth hormone in plasma and may be a modulator/inhibitor of GH signaling. Isoform 2 up-regulates the production of GHBP and acts as a negative inhibitor of GH signaling.

Immunogen: A synthetic peptide of human Growth hormone receptor

Applications: WB,IP

Recommended Dilutions: WB: 1/500-1/1000 IP: 1/20

Host Species: Rabbit

Clonality: Rabbit Monoclonal

Clone ID: R02-6E6

MW: Calculated MW: 72 kDa; Observed MW: 120 kDa

Isotype: IgG

Purification: Affinity Purified

Species Reactivity: Rat

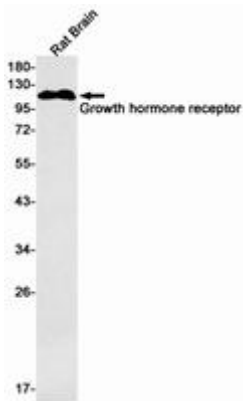
Conjugation: Unconjugated

Modification: Unmodified

Constituents: PBS (without Mg²⁺ and Ca²⁺), pH 7.3 containing 50% glycerol, 0.5% BSA and 0.02% sodium azide

Research Areas: Signal Transduction

Storage & Shipping: Store at -20°C. Avoid repeated freezing and thawing



Western blot analysis of Growth hormone receptor in rat Brain lysates using Growth Hormone Receptor antibody.