

GROWTH HORMONE RECEPTOR RABBIT PAB

Cat.#: N225858

Product Name: Anti-Growth Hormone Receptor Rabbit pAb

Synonyms: GHR; Growth hormone receptor; GH receptor; Somatotropin receptor

UNIPROT ID: P10912

Background: Receptor for pituitary gland growth hormone involved in regulating postnatal body growth. On ligand binding, couples to the JAK2/STAT5 pathway. The soluble form (GHBP) acts as a reservoir of growth hormone in plasma and may be a modulator/inhibitor of GH signaling. Isoform 2 up-regulates the production of GHBP and acts as a negative inhibitor of GH signaling.

Immunogen: A synthesized peptide derived from human Growth hormone receptor

Applications: WB, ICC/IF, FC

Recommended Dilutions: WB: 1/500-1/1000 IF: 1/50-1/200 FC: 1/50-1/100

Host Species: Rabbit

Clonality: Rabbit Polyclonal

Clone ID: -

MW: Calculated MW: 72 kDa; Observed MW: 140 kDa

Isotype: IgG

Purification: Affinity Chromatography

Species Reactivity: Human, Mouse, Rat

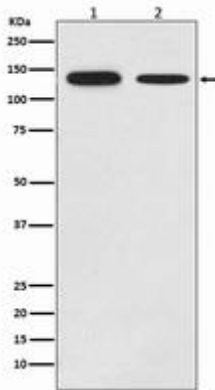
Conjugation: Unconjugated

Modification: Unmodified

Constituents: PBS (without Mg²⁺ and Ca²⁺), pH 7.3 containing 50% glycerol, 0.5% BSA and 0.02% sodium azide

Research Areas: Signal Transduction

Storage & Shipping: Store at -20°C. Avoid repeated freezing and thawing



Western blot analysis of Growth hormone receptor in (1) MCF-7 lysates; (2) mouse brain lysates using Growth Hormone Receptor antibody.