

## GRTP1 RABBIT PAB

**Cat.#:** S215925

**Product Name:** Anti-GRTP1 Rabbit Polyclonal Antibody

**Synonyms:** TBC1D6

**UNIPROT ID:** Q5TC63 (Gene Accession - NP\_078995 )

**Background:** GRTP1 (Growth hormone-regulated TBC protein 1), also designated TBC1 domain family member 6, is a 336 amino acid protein with expression modulated by growth hormone. The TBC1 domain of GRTP1 is a region that is notably conserved among GTPase-activating proteins, which characteristically play a role in the cell cycle and mitosis coordination. Interestingly, expression of GRTP1 is significantly upregulated in post-puberty testis and then maintained in the adult, suggesting that the germ cell may be the major site of GRTP1 function. There are two isoforms of GRTP1, which are a result of alternative splicing events. May act as a GTPase-activating protein for Rab family protein(s).

**Immunogen:** Synthetic peptide of human GRTP1

**Applications:** ELISA, IHC

**Recommended Dilutions:** IHC: 25-50; ELISA: 5000-10000

**Host Species:** Rabbit

**Clonality:** Rabbit Polyclonal

**Isotype:** Immunogen-specific rabbit IgG

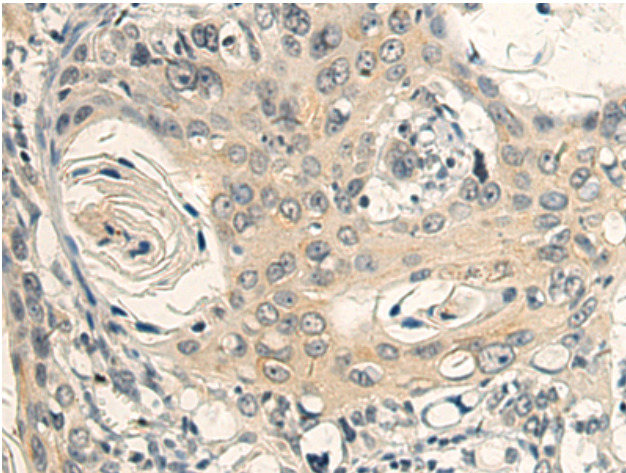
**Purification:** Antigen affinity purification

**Species Reactivity:** Human

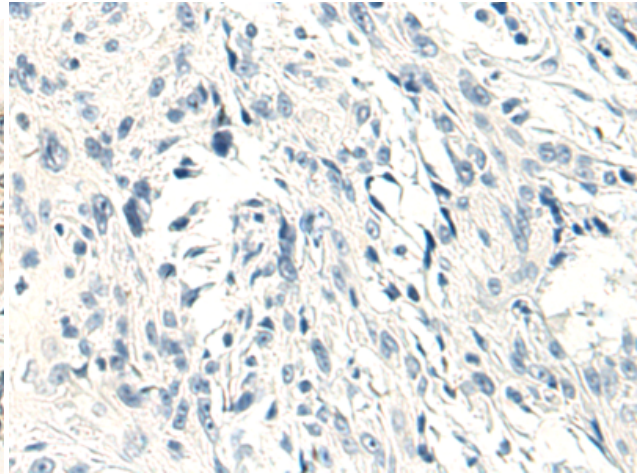
**Constituents:** PBS (without Mg<sup>2+</sup> and Ca<sup>2+</sup>), pH 7.4, 150 mM NaCl, 0.05% Sodium Azide and 40% glycerol

**Research Areas:** Signal Transduction

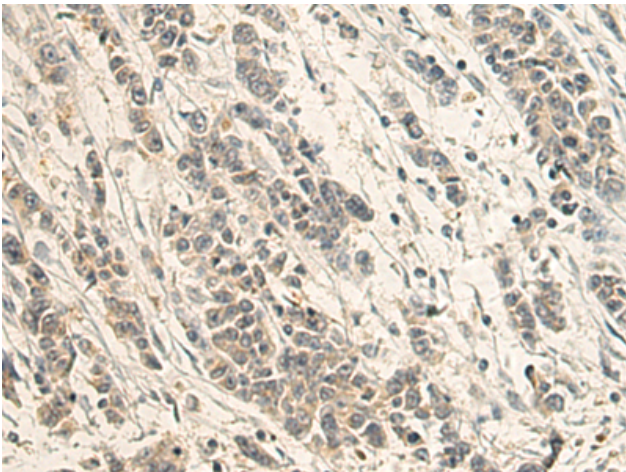
**Storage & Shipping:** Store at -20°C. Avoid repeated freezing and thawing



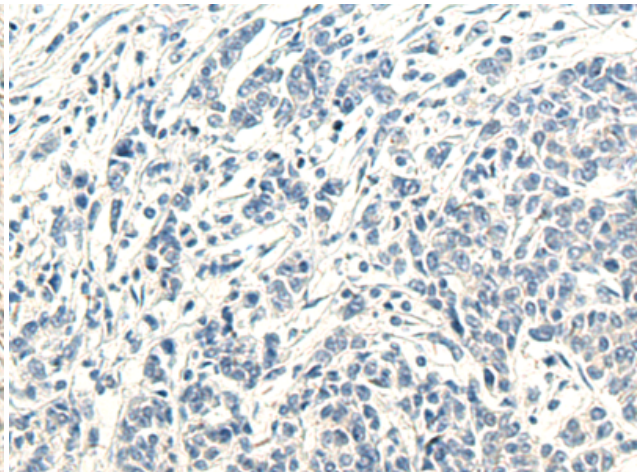
Immunohistochemistry analysis of paraffin embedded Human esophagus cancer using 215925 (GRTPI Antibody) at a dilution of 1/40 (Cytoplasm).



In comparison with the IHC on the left, the same paraffin-embedded Human esophagus cancer is first treated with the synthetic peptide and then with 215925 (Anti-GRTPI Antibody) at dilution 1/40.



The image on the left is immunohistochemistry of paraffin-embedded Human colorectal cancer using 215925 (Anti-GRTPI Antibody) at a dilution of 1/40.



In comparison with the IHC on the left, the same paraffin-embedded Human colorectal cancer is first treated with synthetic peptide and then with D164134 (Anti-GRTPI Antibody) at dilution 1/40.