

## GRWD1 RABBIT PAB

**Cat.#:** S218702

**Product Name:** Anti-GRWD1 Rabbit Polyclonal Antibody

**Synonyms:** CDW4; GRWD; RRB1; WDR28

**UNIPROT ID:** Q9BQ67 (Gene Accession - BC002440 )

**Background:** This gene encodes a glutamate-rich protein that contains five WD-repeat motifs. The encoded protein may play a critical role in ribosome biogenesis and may also play a role in histone methylation through interactions with CUL4-DDB1 ubiquitin E3 ligase.

**Immunogen:** Fusion protein of human GRWD1

**Applications:** ELISA, IHC

**Recommended Dilutions:** IHC: 50-200; ELISA: 5000-10000

**Host Species:** Rabbit

**Clonality:** Rabbit Polyclonal

**Isotype:** Immunogen-specific rabbit IgG

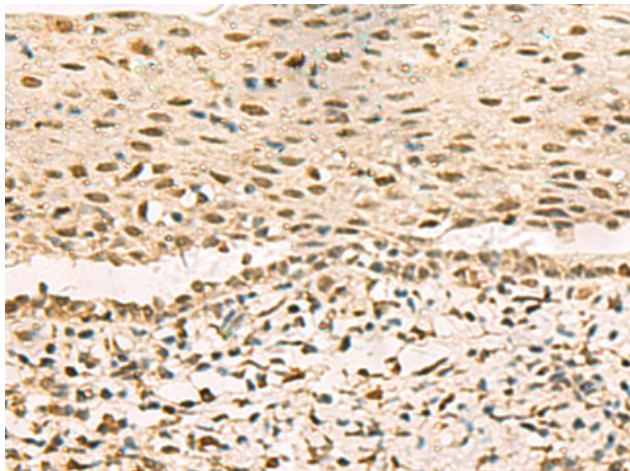
**Purification:** Antigen affinity purification

**Species Reactivity:** Human, Mouse, Rat

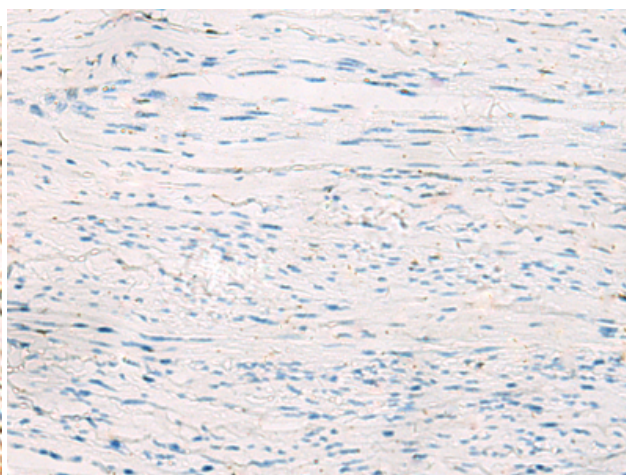
**Constituents:** PBS (without Mg<sup>2+</sup> and Ca<sup>2+</sup>), pH 7.4, 150 mM NaCl, 0.05% Sodium Azide and 40% glycerol

**Research Areas:** Epigenetics and Nuclear Signaling

**Storage & Shipping:** Store at -20°C. Avoid repeated freezing and thawing



Immunohistochemistry analysis of paraffin embedded Human cervical cancer tissue using 218702 (GRWD1 Antibody) at a dilution of 1/90 (Nucleus).



In comparison with the IHC on the left, the same paraffin-embedded Human cervical cancer tissue is first treated with the fusion protein and then with 218702 (Anti-GRWD1 Antibody) at dilution 1/90.