

GSG1L RABBIT PAB

Cat.#: S218988

Product Name: Anti-GSG1L Rabbit Polyclonal Antibody

Synonyms: PRO19651

UNIPROT ID: Q6UXU4 (Gene Accession - BC016460)

Background: As a component of the inner core of AMPAR complex modifies AMPA receptor (AMPA) gating.

Immunogen: Fusion protein of human GSG1L

Applications: ELISA, IHC

Recommended Dilutions: IHC: 50-300; ELISA: 5000-10000

Host Species: Rabbit

Clonality: Rabbit Polyclonal

Isotype: Immunogen-specific rabbit IgG

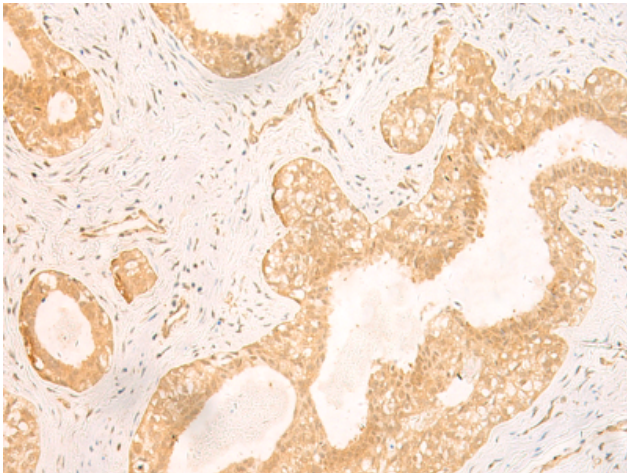
Purification: Antigen affinity purification

Species Reactivity: Human, Mouse, Rat

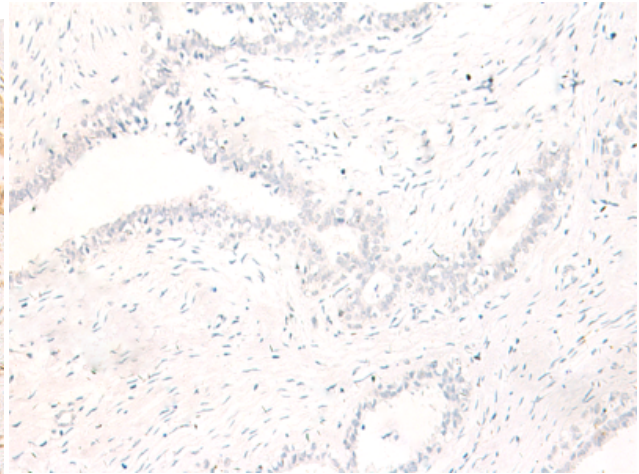
Constituents: PBS (without Mg²⁺ and Ca²⁺), pH 7.4, 150 mM NaCl, 0.05% Sodium Azide and 40% glycerol

Research Areas: Cell Biology

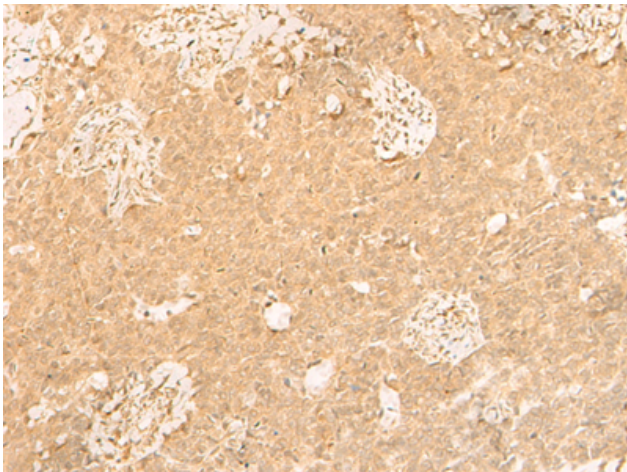
Storage & Shipping: Store at -20°C. Avoid repeated freezing and thawing



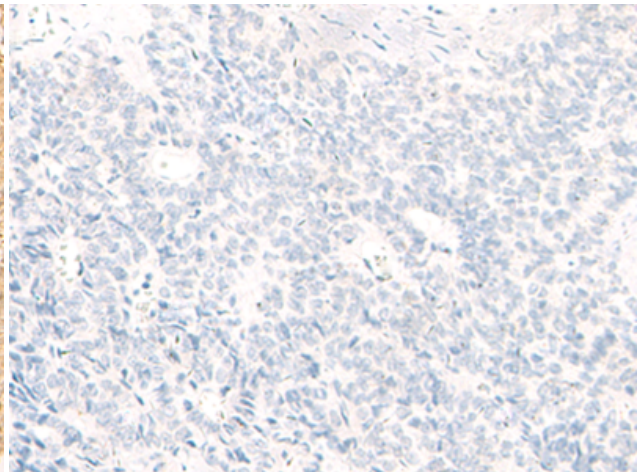
Immunohistochemistry analysis of paraffin embedded Human breast cancer tissue using 218988(GSGIL Antibody) at a dilution of 1/50(Cytoplasm and Nucleus).



In comparison with the IHC on the left, the same paraffin-embedded Human breast cancer tissue is first treated with the fusion protein and then with 218988(Anti-GSGIL Antibody) at dilution 1/50.



The image on the left is immunohistochemistry of paraffin-embedded Human ovarian cancer tissue using 218988(Anti-GSGIL Antibody) at a dilution of 1/50.



In comparison with the IHC on the left, the same paraffin-embedded Human ovarian cancer tissue is first treated with fusion protein and then with D225611(Anti-GSGIL Antibody) at dilution 1/50.