

GSK3 ALPHA RABBIT MAB

Cat.#: N262307

Product Name: Anti-GSK3 alpha Rabbit Monoclonal Antibody

Synonyms: Serine/threonine-protein kinase GSK3A

UNIPROT ID: P49840

Background: GSK3A a proline-directed protein kinase of the GSK family. Implicated in the control of several regulatory proteins including glycogen synthase, Myb, and c-Jun. GSK3 and GSK3 have similar functions. GSK3 phosphorylates tau, the principal component of neurofibrillary tangles in Alzheimer disease and is required for maximal production of amyloid plaque peptides by secretase.

Immunogen: A synthetic peptide of human GSK3 alpha

Applications: WB,ICC/IF,IP

Recommended Dilutions: WB: 1/500-1/1000 IF: 1/50-1/200 IP: 1/20

Host Species: Rabbit

Clonality: Rabbit Monoclonal

Clone ID: R07-3A2

MW: Calculated MW: 51 kDa; Observed MW: 51 kDa

Isotype: IgG

Purification: Affinity Purified

Species Reactivity: Human,Mouse,Rat

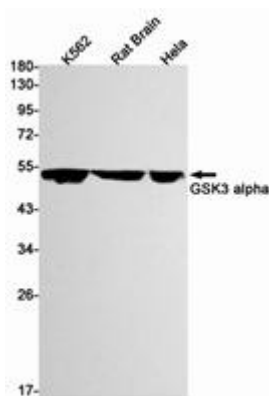
Conjugation: Unconjugated

Modification: Unmodified

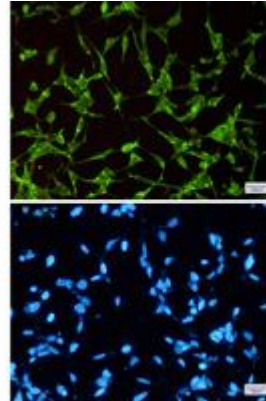
Constituents: PBS (without Mg²⁺ and Ca²⁺), pH 7.3 containing 50% glycerol, 0.5% BSA and 0.02% sodium azide

Research Areas: Neuroscience

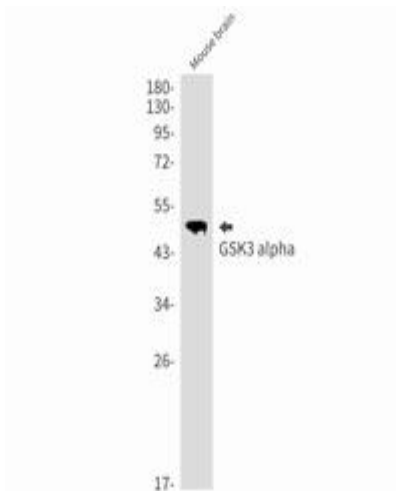
Storage & Shipping: Store at -20°C. Avoid repeated freezing and thawing



Western blot analysis of GSK3 alpha in K562, rat Brain, Hela lysates using GSK3 alpha antibody



Immunocytochemistry analysis of GSK3 alpha (green) in 293t using GSK3 alpha antibody, and DAPI (blue).



Western blot analysis of GSK3 alpha in mouse brain lysates using GSK3 alpha antibody.