

GSK3 BETA (2E6) MOUSE MAB

Cat.#: N261410

Product Name: Anti-GSK3 beta (2E6) Mouse Monoclonal Antibody

Synonyms: GSK3B; Glycogen synthase kinase-3 beta; GSK-3 beta; Serine/threonine-protein kinase GSK3B

UNIPROT ID: P49841

Background: Glycogen synthase kinase-3 (GSK3) is a proline-directed serine-threonine kinase that was initially identified as a phosphorylating and inactivating glycogen synthase. GSK3B is involved in energy metabolism, neuronal cell development, and body pattern formation. In skeletal muscle, it contributes to insulin regulation of glycogen synthesis by phosphorylating and inhibiting GYS1 activity and hence glycogen synthesis.

Immunogen: Purified recombinant GSK-3 β protein fragments expressed in E.coli.

Applications: WB, ICC, IF, IP, FC

Recommended Dilutions: WB: 1/500-1/1000 IF: 1/50-1/200 IP: 1/20 FC: 1/50-1/100

Host Species: Mouse

Clonality: Mouse Monoclonal

Clone ID: 2E6-D6-C12

MW: Calculated MW: 47 kDa; Observed MW: 47 kDa

Isotype: IgG2a

Purification: Affinity Purified

Species Reactivity: Human, Mouse, Rat

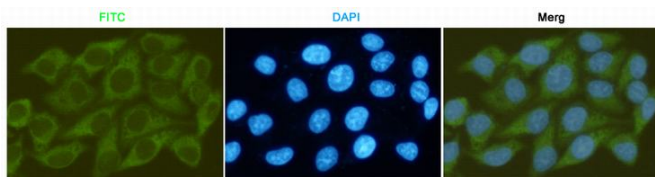
Conjugation: Unconjugated

Modification: Unmodified

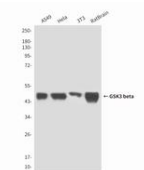
Constituents: PBS (without Mg²⁺ and Ca²⁺), pH 7.3 containing 50% glycerol, 0.5% BSA and 0.02% sodium azide

Research Areas: Hypoxia Signal Transduction Hypoxia-Inhibition

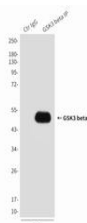
Storage & Shipping: Store at -20°C. Avoid repeated freezing and thawing



Immunocytochemistry analysis of GSK3 beta (2E6) in HeLa using GSK3 beta antibody.



Western blot analysis of GSK3 beta (2E6) in A549, HeLa, 3T3 and rat Brain lysates using GSK3 beta antibody.



Immunoprecipitation analysis of GSK3 beta (2E6) in HeLa lysates using GSK3 beta (2E6) antibody. Western blot analysis of GSK3 beta using GSK3 beta antibody.