

GSK3 BETA RABBIT MAB

Cat.#: N261696

Product Name: Anti-GSK3 beta Rabbit Monoclonal Antibody

Synonyms: GSK3B; Glycogen synthase kinase-3 beta; GSK-3 beta; Serine/threonine-protein kinase GSK3B

UNIPROT ID: P49841

Background: Glycogen synthase kinase-3 (GSK3) is a proline-directed serine-threonine kinase that was initially identified as a phosphorylating and inactivating glycogen synthase. GSK3B is involved in energy metabolism, neuronal cell development, and body pattern formation. In skeletal muscle, it contributes to insulin regulation of glycogen synthesis by phosphorylating and inhibiting GYS1 activity and hence glycogen synthesis.

Immunogen: A synthetic peptide of human GSK3 beta

Applications: WB, IHC-P

Recommended Dilutions: WB: 1/500-1/1000 IHC: 1/50-1/100

Host Species: Rabbit

Clonality: Rabbit Monoclonal

Clone ID: R09-7G8

MW: Calculated MW: 47 kDa; Observed MW: 47 kDa

Isotype: IgG

Purification: Affinity Purified

Species Reactivity: Human, Rat, Hamster

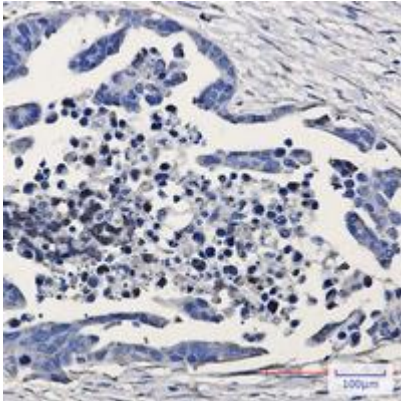
Conjugation: Unconjugated

Modification: Unmodified

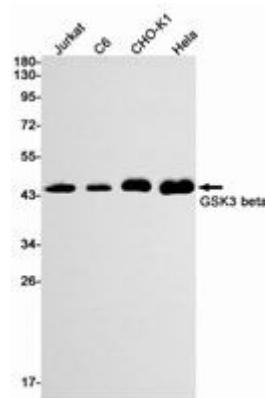
Constituents: PBS (without Mg²⁺ and Ca²⁺), pH 7.3 containing 50% glycerol, 0.5% BSA and 0.02% sodium azide

Research Areas: Neuroscience

Storage & Shipping: Store at -20°C. Avoid repeated freezing and thawing



Immunohistochemistry analysis of paraffin-embedded Human Cholangiocarcinoma using GSK3 beta antibody. High-pressure and temperature Sodium Citrate pH 6.0 was used for antigen retrieval.



Western blot analysis of GSK3 beta in Jurkat, C6, CHO-K1, HeLa lysates using GSK3 beta antibody.