

## GSK3A RABBIT PAB

**Cat.#:** S219839

**Product Name:** Anti-GSK3A Rabbit Polyclonal Antibody

**Synonyms:**

**UNIPROT ID:** P49840 (Gene Accession - NP\_063937 )

**Background:** This gene encodes a multifunctional Ser/Thr protein kinase that is implicated in the control of several regulatory proteins including glycogen synthase, and transcription factors, such as JUN. It also plays a role in the WNT and PI3K signaling pathways, as well as regulates the production of beta-amyloid peptides associated with Alzheimer's disease. May also mediate the development of insulin resistance by regulating activation of transcription factors. In Wnt signaling, regulates the level and transcriptional activity of nuclear CTNNB1/beta-catenin. Facilitates amyloid precursor protein (APP) processing and the generation of APP-derived amyloid plaques found in Alzheimer disease. May be involved in the regulation of replication in pancreatic beta-cells. Is necessary for the establishment of neuronal polarity and axon outgrowth.

**Immunogen:** Synthetic peptide of human GSK3A

**Applications:** ELISA, IHC

**Recommended Dilutions:** IHC: 50-200; ELISA: 2000-10000

**Host Species:** Rabbit

**Clonality:** Rabbit Polyclonal

**Isotype:** Immunogen-specific rabbit IgG

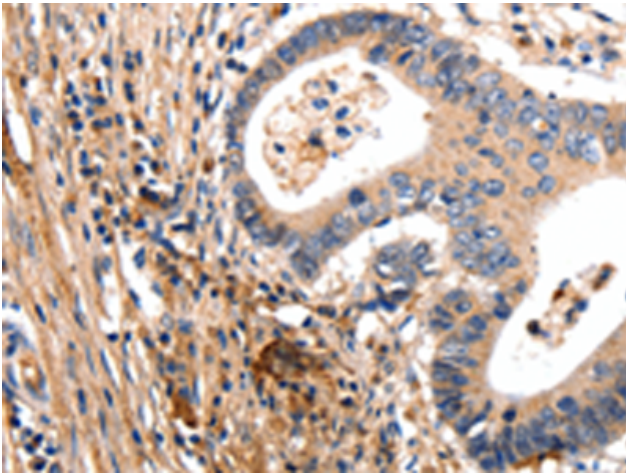
**Purification:** Antigen affinity purification

**Species Reactivity:** Human

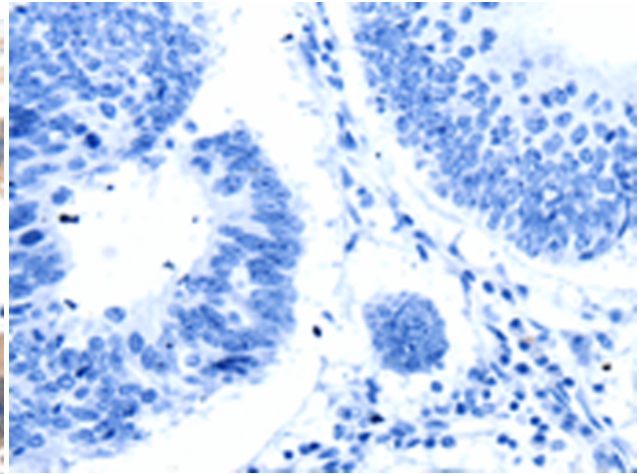
**Constituents:** PBS (without Mg<sup>2+</sup> and Ca<sup>2+</sup>), pH 7.4, 150 mM NaCl, 0.05% Sodium Azide and 40% glycerol

**Research Areas:** Signal Transduction, Cancer, Cardiovascular

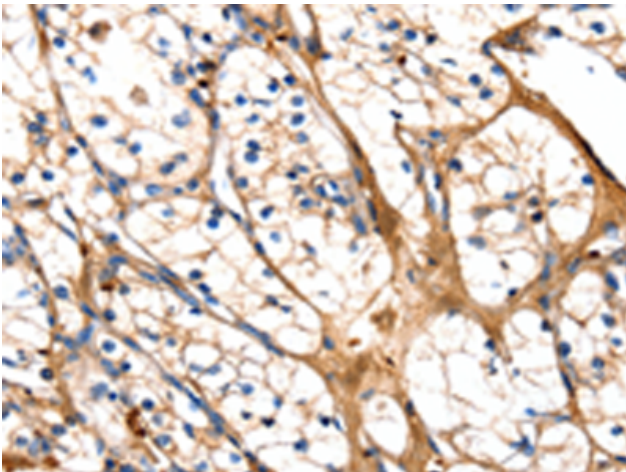
**Storage & Shipping:** Store at -20°C. Avoid repeated freezing and thawing



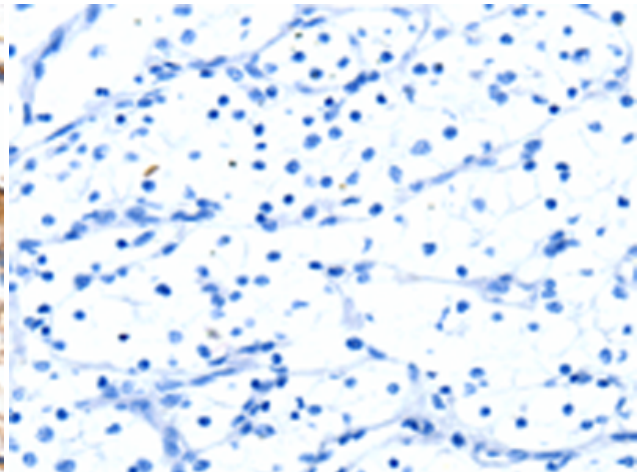
Immunohistochemistry analysis of paraffin embedded Human colon cancer tissue using 219839 (GSK3A Antibody) at a dilution of 1/50 (Cytoplasm).



In comparison with the IHC on the left, the same paraffin-embedded Human colon cancer tissue is first treated with the synthetic peptide and then with 219839 (Anti-GSK3A Antibody) at dilution 1/50.



The image on the left is immunohistochemistry of paraffin-embedded Human renal cancer tissue using 219839 (Anti-GSK3A Antibody) at a dilution of 1/50.



In comparison with the IHC on the left, the same paraffin-embedded Human renal cancer tissue is first treated with synthetic peptide and then with D260467 (Anti-GSK3A Antibody) at dilution 1/50.