

GSPT1 RABBIT PAB

Cat.#: S221978

Product Name: Anti-GSPT1 Rabbit Polyclonal Antibody

Synonyms: GST1; ETF3A; eRF3a; 551G9.2

UNIPROT ID: P15170 (Gene Accession - NP_001123478)

Background: Involved in translation termination in response to the termination codons UAA, UAG and UGA. Stimulates the activity of ERF1. Involved in regulation of mammalian cell growth. Component of the transient SURF complex which recruits UPFI to stalled ribosomes in the context of nonsense-mediated decay (NMD) of mRNAs containing premature stop codons.

Immunogen: Synthetic peptide of human GSPT1

Applications: ELISA, IHC

Recommended Dilutions: IHC: 25-50; ELISA: 5000-10000

Host Species: Rabbit

Clonality: Rabbit Polyclonal

Isotype: Immunogen-specific rabbit IgG

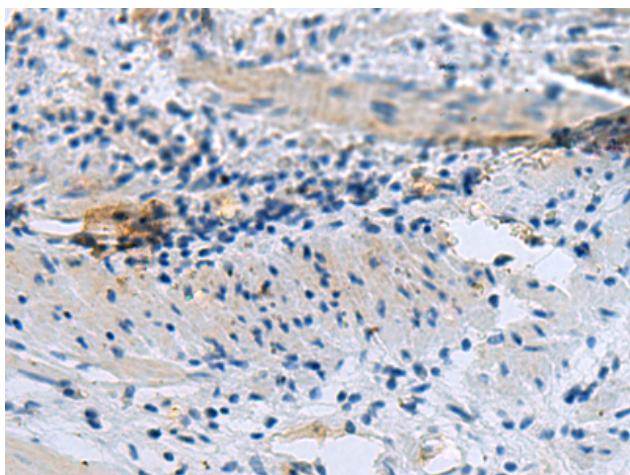
Purification: Antigen affinity purification

Species Reactivity: Human, Mouse

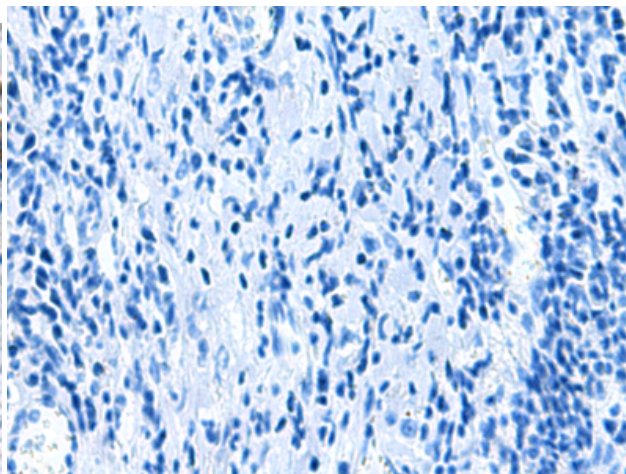
Constituents: PBS (without Mg²⁺ and Ca²⁺), pH 7.4, 150 mM NaCl, 0.05% Sodium Azide and 40% glycerol

Research Areas: Epigenetics and Nuclear Signaling

Storage & Shipping: Store at -20°C. Avoid repeated freezing and thawing



Immunohistochemistry analysis of paraffin embedded Human gastric cancer tissue using 221978(GSPT1 Antibody) at a dilution of 1/20(Cytoplasm).



In comparison with the IHC on the left, the same paraffin-embedded Human gastric cancer tissue is first treated with the synthetic peptide and then with 221978(Anti-GSPT1 Antibody) at dilution 1/20.