

GSTA5 RABBIT PAB

Cat.#: S222149

Product Name: Anti-GSTA5 Rabbit Polyclonal Antibody

Synonyms:

UNIPROT ID: Q7RTV2 (Gene Accession - NP_714543)

Background: The glutathione S-transferases (GST; EC 2.5.1.18) catalyze the conjugation of reduced glutathiones and a variety of electrophiles, including many known carcinogens and mutagens. The cytosolic GSTs belong to a large superfamily, with members located on different chromosomes. For additional information on GSTs, see GSTA1 (MIM 138359).

Immunogen: Synthetic peptide of human GSTA5

Applications: ELISA, WB, IHC

Recommended Dilutions: IHC: 200-300;WB: 1000-5000;ELISA: 5000-10000

Host Species: Rabbit

Clonality: Rabbit Polyclonal

Isotype: Immunogen-specific rabbit IgG

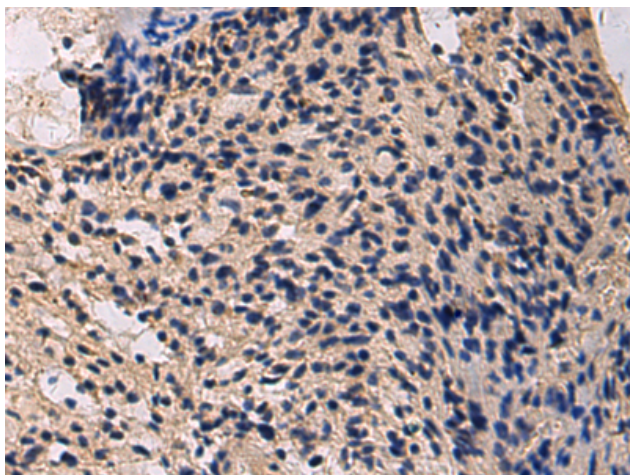
Purification: Antigen affinity purification

Species Reactivity: Human, Rat

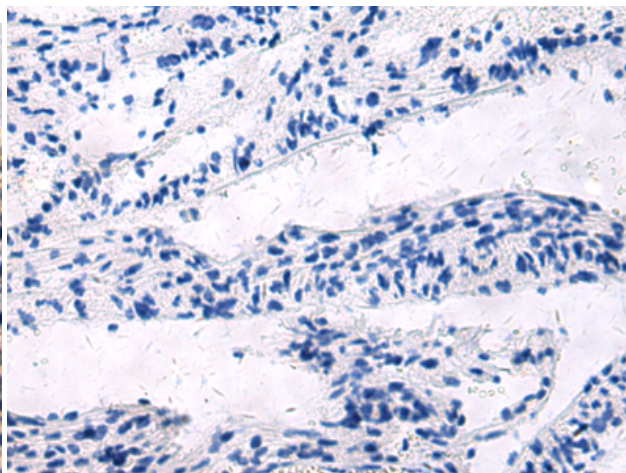
Constituents: PBS (without Mg²⁺ and Ca²⁺), pH 7.4, 150 mM NaCl, 0.05% Sodium Azide and 40% glycerol

Research Areas: Metabolism

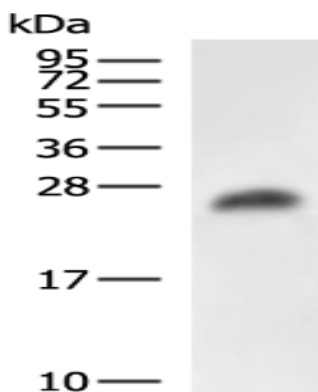
Storage & Shipping: Store at -20°C. Avoid repeated freezing and thawing



Immunohistochemistry analysis of paraffin embedded Human brain tissue using 222149(GSTA5 Antibody) at a dilution of 1/180(Cytoplasm).



In comparison with the IHC on the left, the same paraffin-embedded Human brain tissue is first treated with the synthetic peptide and then with 222149(Anti-GSTA5 Antibody) at dilution 1/180.



Gel: 12%SDS-PAGE, Lysate: 40 μ g;
Lane: Rat liver tissue lysate;
Primary antibody: 222149(GSTA5 Antibody) at dilution 1/2700;
Secondary antibody: HRP-conjugated Goat anti rabbit IgG at 1/5000 dilution;
Exposure time: 30 seconds