

## GSTM2 RABBIT PAB

**Cat.#:** S218143

**Product Name:** Anti-GSTM2 Rabbit Polyclonal Antibody

**Synonyms:** GST4; GSTM; GTHMUS; GSTM2-2

**UNIPROT ID:** P28161 (Gene Accession - BC110380 )

**Background:** Cytosolic and membrane-bound forms of glutathione S-transferase are encoded by two distinct supergene families. At present, eight distinct classes of the soluble cytoplasmic mammalian glutathione S-transferases have been identified: alpha, kappa, mu, omega, pi, sigma, theta and zeta. This gene encodes a glutathione S-transferase that belongs to the mu class. The mu class of enzymes functions in the detoxification of electrophilic compounds, including carcinogens, therapeutic drugs, environmental toxins and products of oxidative stress, by conjugation with glutathione. The genes encoding the mu class of enzymes are organized in a gene cluster on chromosome 1p13.3 and are known to be highly polymorphic. These genetic variations can change an individual's susceptibility to carcinogens and toxins as well as affect the toxicity and efficacy of certain drugs.

**Immunogen:** Fusion protein of human GSTM2

**Applications:** ELISA, WB, IHC

**Recommended Dilutions:** IHC: 250-500;WB: 1000-5000;ELISA: 5000-10000

**Host Species:** Rabbit

**Clonality:** Rabbit Polyclonal

**Isotype:** Immunogen-specific rabbit IgG

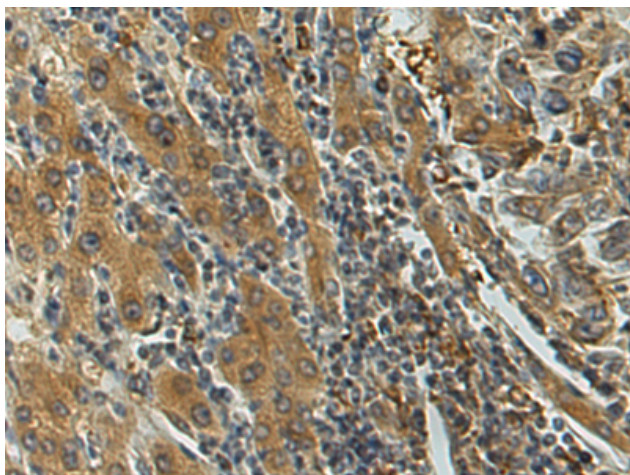
**Purification:** Antigen affinity purification

**Species Reactivity:** Human, Mouse

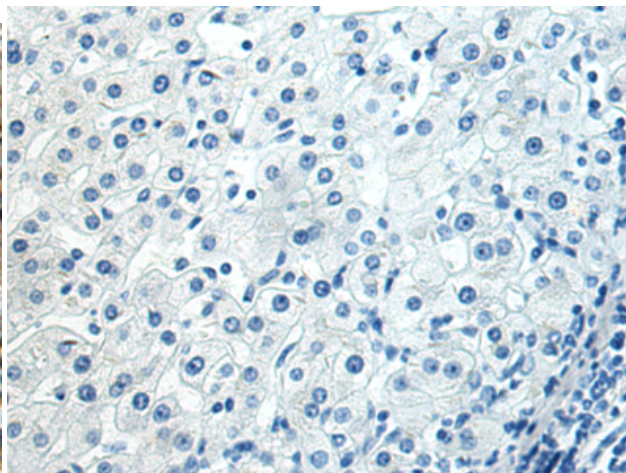
**Constituents:** PBS (without Mg<sup>2+</sup> and Ca<sup>2+</sup>), pH 7.4, 150 mM NaCl, 0.05% Sodium Azide and 40% glycerol

**Research Areas:** Metabolism

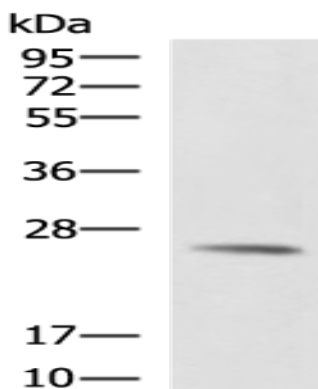
**Storage & Shipping:** Store at -20°C. Avoid repeated freezing and thawing



Immunohistochemistry analysis of paraffin embedded Human liver cancer tissue using 218143(GSTM2 Antibody) at a dilution of 1/320(Cytoplasm).



In comparison with the IHC on the left, the same paraffin-embedded Human liver cancer tissue is first treated with the fusion protein and then with 218143(Anti-GSTM2 Antibody) at dilution 1/320.



Gel: 8%SDS-PAGE, Lysate: 40 µg;  
Lane: Mouse skeletal muscle tissue lysate;  
Primary antibody: 218143(GSTM2 Antibody) at dilution 1/1300;  
Secondary antibody: HRP-conjugated Goat anti rabbit IgG at 1/5000 dilution;  
Exposure time: 3 minutes