

GTF2H1 RABBIT PAB

Cat.#: S221089

Product Name: Anti-GTF2H1 Rabbit Polyclonal Antibody

Synonyms: P62; BTF2; TFB1; TFIIH

UNIPROT ID: P32780 (Gene Accession - NP_005307)

Background: Component of the core-TFIIH basal transcription factor involved in nucleotide excision repair (NER) of DNA and, when complexed to CAK, in RNA transcription by RNA polymerase II.

Immunogen: Synthetic peptide of human GTF2H1

Applications: ELISA, IHC

Recommended Dilutions: IHC: 25-100; ELISA: 5000-10000

Host Species: Rabbit

Clonality: Rabbit Polyclonal

Isotype: Immunogen-specific rabbit IgG

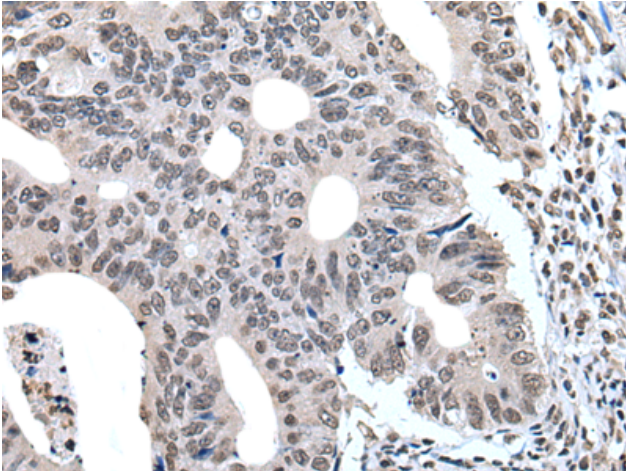
Purification: Antigen affinity purification

Species Reactivity: Human, Mouse

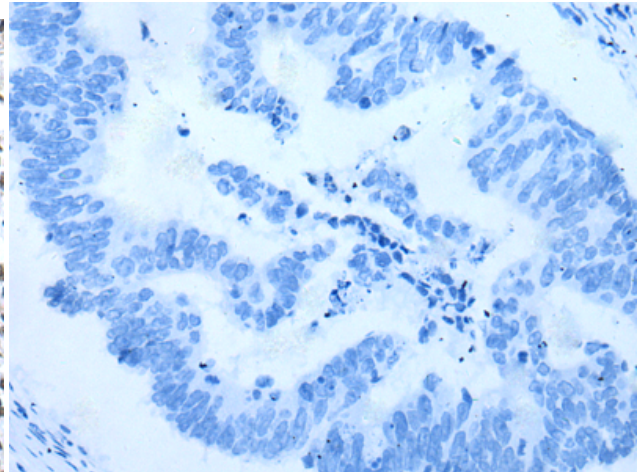
Constituents: PBS (without Mg²⁺ and Ca²⁺), pH 7.4, 150 mM NaCl, 0.05% Sodium Azide and 40% glycerol

Research Areas: Epigenetics and Nuclear Signaling

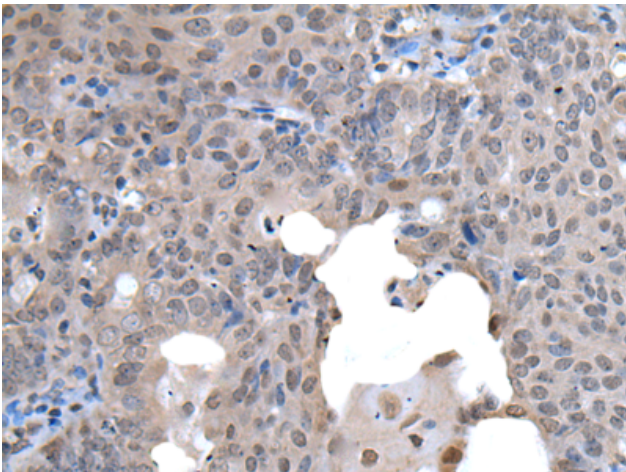
Storage & Shipping: Store at -20°C. Avoid repeated freezing and thawing



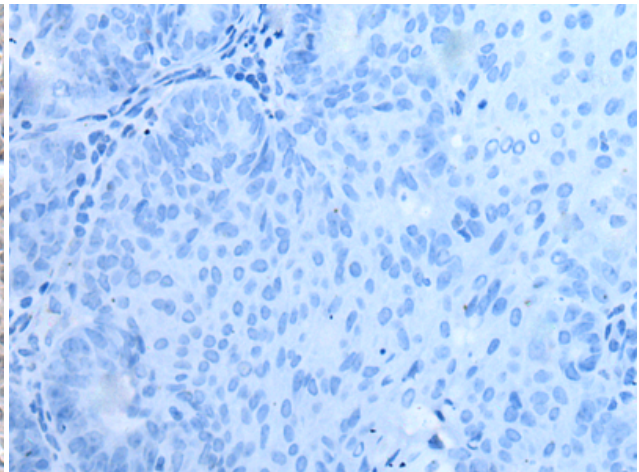
Immunohistochemistry analysis of paraffin embedded Human colorectal cancer tissue using 221089(GTF2H1 Antibody) at a dilution of 1/30(Nucleus).



In comparison with the IHC on the left, the same paraffin-embedded Human colorectal cancer tissue is first treated with the synthetic peptide and then with 221089(Anti-GTF2H1 Antibody) at dilution 1/30.



The image on the left is immunohistochemistry of paraffin-embedded Human ovarian cancer tissue using 221089(Anti-GTF2H1 Antibody) at a dilution of 1/30.



In comparison with the IHC on the left, the same paraffin-embedded Human ovarian cancer tissue is first treated with synthetic peptide and then with D262460(Anti-GTF2H1 Antibody) at dilution 1/30.