

GTF3C3 RABBIT PAB

Cat.#: S222153

Product Name: Anti-GTF3C3 Rabbit Polyclonal Antibody

Synonyms: TFIIIC102; TFIIICgamma; TFIIIC2-102

UNIPROT ID: Q9Y5Q9 (Gene Accession - NP_036218)

Background: The protein encoded by this gene is part of the TFIIIC2 complex which binds to the promoters of small nuclear and cytoplasmic RNA genes in order to recruit RNA polymerase III. The TFIIIC2 complex is composed of six subunits. Two transcript variants encoding different isoforms have been found for this gene.

Immunogen: Synthetic peptide of human GTF3C3

Applications: ELISA, IHC

Recommended Dilutions: IHC: Oct-50; ELISA: 5000-10000

Host Species: Rabbit

Clonality: Rabbit Polyclonal

Isotype: Immunogen-specific rabbit IgG

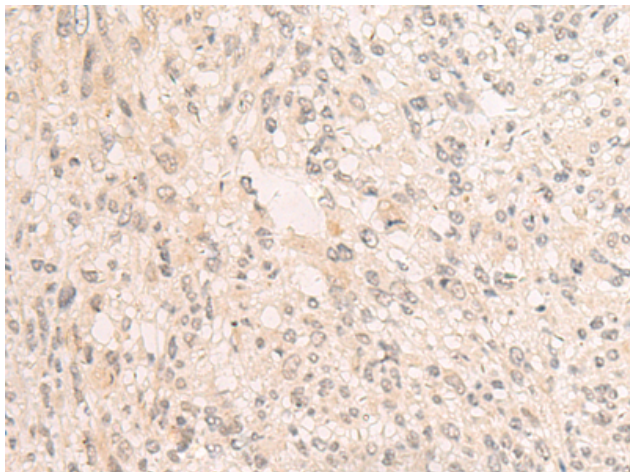
Purification: Antigen affinity purification

Species Reactivity: Human

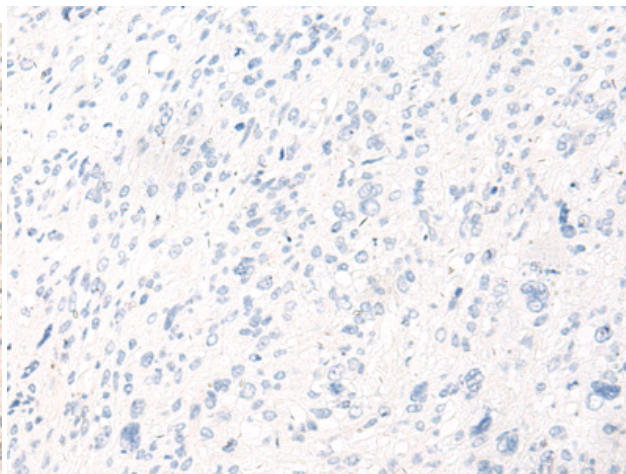
Constituents: PBS (without Mg²⁺ and Ca²⁺), pH 7.4, 150 mM NaCl, 0.05% Sodium Azide and 40% glycerol

Research Areas: Epigenetics and Nuclear Signaling

Storage & Shipping: Store at -20°C. Avoid repeated freezing and thawing



Immunohistochemistry analysis of paraffin embedded Human liver cancer tissue using 222153(GTF3C3 Antibody) at a dilution of 1/20(Nucleus).



In comparison with the IHC on the left, the same paraffin-embedded Human liver cancer tissue is first treated with the synthetic peptide and then with 222153(Anti-GTF3C3 Antibody) at dilution 1/20.