

GTF3C4 RABBIT PAB

Cat.#: S222154

Product Name: Anti-GTF3C4 Rabbit Polyclonal Antibody

Synonyms: KAT12; TFIII90; TFIIIC90; TFIIIC290; TF3C-delta; TFIIICDELTA

UNIPROT ID: Q9UKN8 (Gene Accession - NP_036336)

Background: Essential for RNA polymerase III to make a number of small nuclear and cytoplasmic RNAs, including 5S RNA, tRNA, and adenovirus-associated (VA) RNA of both cellular and viral origin. Has histone acetyltransferase activity (HAT) with unique specificity for free and nucleosomal H3. May cooperate with GTF3C5 in facilitating the recruitment of TFIIIB and RNA polymerase through direct interactions with BRFI, POLR3C and POLR3F. May be localized close to the A box.

Immunogen: Synthetic peptide of human GTF3C4

Applications: ELISA, WB, IHC

Recommended Dilutions: IHC: 150-300;WB: 1000-5000;ELISA: 5000-10000

Host Species: Rabbit

Clonality: Rabbit Polyclonal

Isotype: Immunogen-specific rabbit IgG

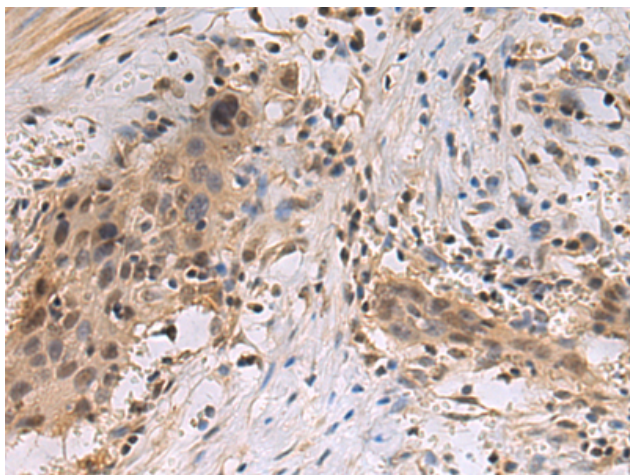
Purification: Antigen affinity purification

Species Reactivity: Human, Mouse

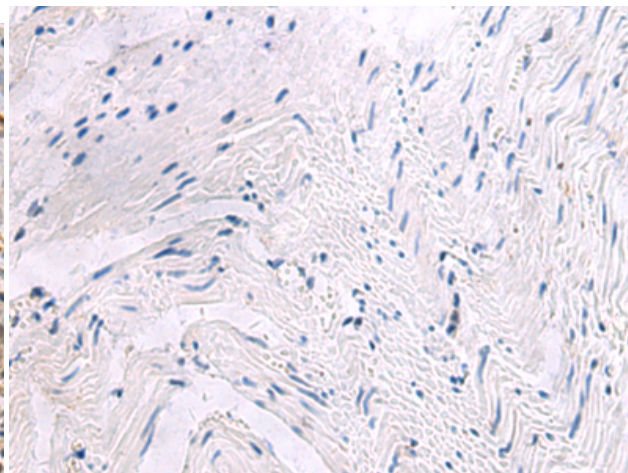
Constituents: PBS (without Mg²⁺ and Ca²⁺), pH 7.4, 150 mM NaCl, 0.05% Sodium Azide and 40% glycerol

Research Areas: Epigenetics and Nuclear Signaling

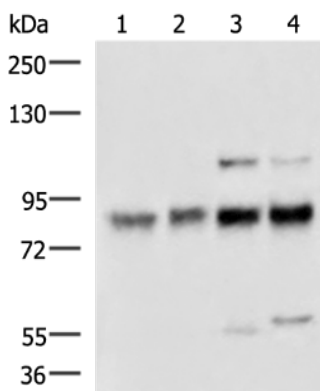
Storage & Shipping: Store at -20°C. Avoid repeated freezing and thawing



Immunohistochemistry analysis of paraffin embedded Human esophagus cancer tissue using 222154(GTF3C4 Antibody) at a dilution of 1/160(Nucleus).



In comparison with the IHC on the left, the same paraffin-embedded Human esophagus cancer tissue is first treated with the synthetic peptide and then with 222154(Anti-GTF3C4 Antibody) at dilution 1/160.



Gel: 6%SDS-PAGE, Lysate: 40 μ g;
 Lane 1-4: A172, HeLa, Jurkat and Raji cell lysates;
 Primary antibody: 222154(GTF3C4 Antibody) at dilution 1/1300;
 Secondary antibody: HRP-conjugated Goat anti rabbit IgG at 1/5000 dilution;
 Exposure time: 2 minutes