

## GTPASE HRAS RABBIT MAB

**Cat.#:** N263526

**Product Name:** Anti-GTPase HRAS Rabbit Monoclonal Antibody

**Synonyms:** NS6; CMNS; NCMS; ALPS4; N-ras; NRAS1

**UNIPROT ID:** P01111

**Background:** Ras proteins bind GDP/GTP and possess intrinsic GTPase activity. Miscellaneous mutations which change AA 12, 13 or 61 activate the potential of Ras to transform cultured cells and are implicated in a variety of human tumors.

**Immunogen:** A synthetic peptide of human Ras

**Applications:** WB, IP

**Recommended Dilutions:** WB: 1/500-1/1000 IP: 1/20

**Host Species:** Rabbit

**Clonality:** Rabbit Monoclonal

**Clone ID:** R01-7D0

**MW:** Calculated MW: 21 kDa; Observed MW: 21 kDa

**Isotype:** IgG

**Purification:** Affinity Purified

**Species Reactivity:** Human, Mouse, Rat, Hamster

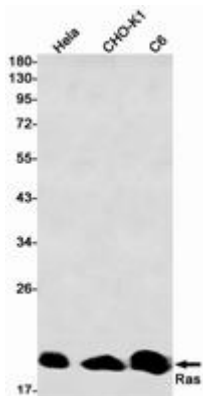
**Conjugation:** Unconjugated

**Modification:** Unmodified

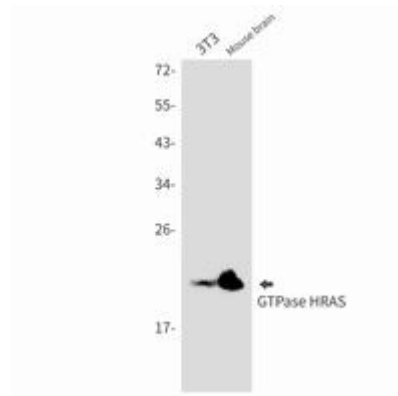
**Constituents:** PBS (without Mg<sup>2+</sup> and Ca<sup>2+</sup>), pH 7.3 containing 50% glycerol, 0.5% BSA and 0.02% sodium azide

**Research Areas:** Signal Transduction

**Storage & Shipping:** Store at -20°C. Avoid repeated freezing and thawing



Western blot analysis of Ras in HeLa, CHO-K1, C6 lysates using Ras antibody.



Western blot analysis of GTPase HRAS in 3T3, mouse brain lysates using GTPase HRAS antibody.