

GTPASE HRAS RABBIT PAB

Cat.#: N225374

Product Name: Anti-GTPase HRAS Rabbit pAb

Synonyms: NS6; CMNS; NCMS; ALPS4; N-ras; NRAS1

UNIPROT ID: P01111

Background: Ras proteins bind GDP/GTP and possess intrinsic GTPase activity. Miscellaneous mutations which change AA 12, 13 or 61 activate the potential of Ras to transform cultured cells and are implicated in a variety of human tumors.

Immunogen: The antiserum was produced against synthesized peptide derived from human RASH/RASK. AA range: 1-50

Applications: WB, IHC-P, ELISA

Recommended Dilutions: WB: 1/500-1/1000 IHC: 1/50-1/100 ELISA: 1/10000

Host Species: Rabbit

Clonality: Rabbit Polyclonal

Clone ID: -

MW: Calculated MW: 21 kDa; Observed MW: 21 kDa

Isotype: IgG

Purification: Affinity Purified

Species Reactivity: Human, Mouse, Rat

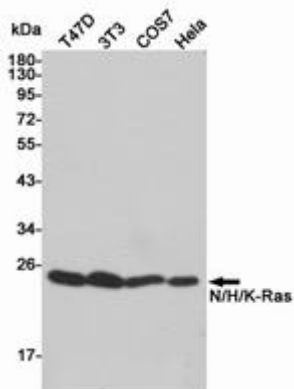
Conjugation: Unconjugated

Modification: Unmodified

Constituents: PBS (without Mg²⁺ and Ca²⁺), pH 7.3 containing 50% glycerol, 0.5% BSA and 0.02% sodium azide

Research Areas: Signal Transduction

Storage & Shipping: Store at -20°C. Avoid repeated freezing and thawing



Western blot analysis of N/H/K-Ras in T47D, 3T3, COS7 and HeLa lysates using N/H/K-Ras antibody.