

GTSE1 RABBIT PAB

Cat.#: S221354

Product Name: Anti-GTSE1 Rabbit Polyclonal Antibody

Synonyms: B99

UNIPROT ID: Q9NYZ3 (Gene Accession - NP_057510)

Background: The protein encoded by this gene is only expressed in the S and G2 phases of the cell cycle, where it colocalizes with cytoplasmic tubulin and microtubules. In response to DNA damage, the encoded protein accumulates in the nucleus and binds the tumor suppressor protein p53, shuttling it out of the nucleus and repressing its ability to induce apoptosis.

Immunogen: Synthetic peptide of human GTSE1

Applications: ELISA, IHC

Recommended Dilutions: IHC: 50-200; ELISA: 5000-10000

Host Species: Rabbit

Clonality: Rabbit Polyclonal

Isotype: Immunogen-specific rabbit IgG

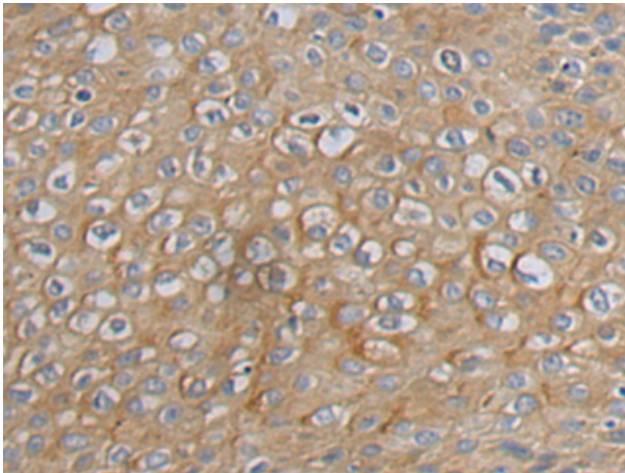
Purification: Antigen affinity purification

Species Reactivity: Human, Mouse

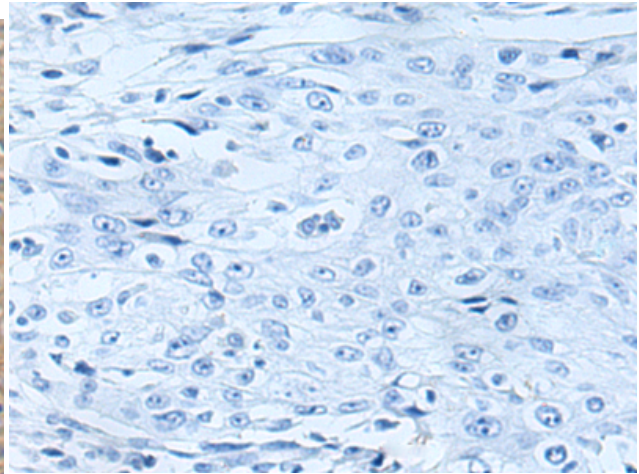
Constituents: PBS (without Mg²⁺ and Ca²⁺), pH 7.4, 150 mM NaCl, 0.05% Sodium Azide and 40% glycerol

Research Areas: Epigenetics and Nuclear Signaling, Cancer

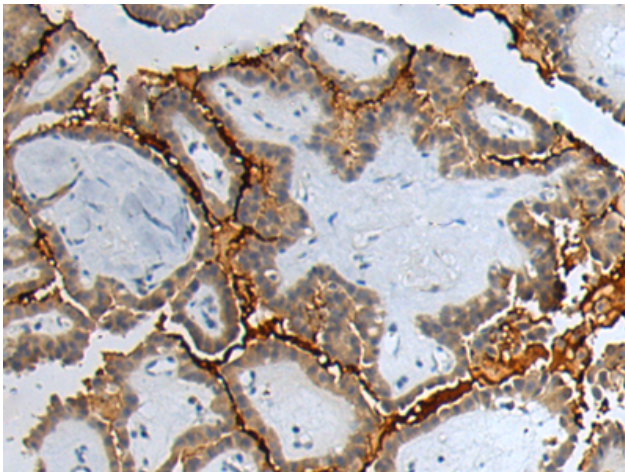
Storage & Shipping: Store at -20°C. Avoid repeated freezing and thawing



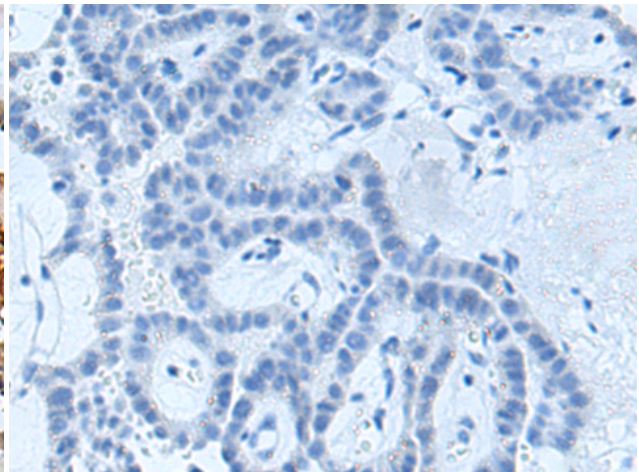
Immunohistochemistry analysis of paraffin embedded Human esophagus cancer tissue using 221354 (GTSE1 Antibody) at a dilution of 1/60 (Cytoplasm).



In comparison with the IHC on the left, the same paraffin-embedded Human esophagus cancer tissue is first treated with the synthetic peptide and then with 221354 (Anti-GTSE1 Antibody) at dilution 1/60.



The image on the left is immunohistochemistry of paraffin-embedded Human thyroid cancer tissue using 221354 (Anti-GTSE1 Antibody) at a dilution of 1/60.



In comparison with the IHC on the left, the same paraffin-embedded Human thyroid cancer tissue is first treated with synthetic peptide and then with D262906 (Anti-GTSE1 Antibody) at dilution 1/60.