

GUCA1B RABBIT PAB

Cat.#: S222070

Product Name: Anti-GUCA1B Rabbit Polyclonal Antibody

Synonyms: RP48; GCAP2; GUCA2

UNIPROT ID: Q9UMX6 (Gene Accession - NP_002089)

Background: The protein encoded by this gene is a calcium-binding protein that activates photoreceptor guanylate cyclases. This gene may have arisen due to a gene duplication event since there is a highly similar gene clustered with it on chromosome 6. Mutations in this gene can cause a form of retinitis pigmentosa.

Immunogen: Synthetic peptide of human GUCA1B

Applications: ELISA, WB, IHC

Recommended Dilutions: IHC: 40-200;WB: 500-2000;ELISA: 5000-10000

Host Species: Rabbit

Clonality: Rabbit Polyclonal

Isotype: Immunogen-specific rabbit IgG

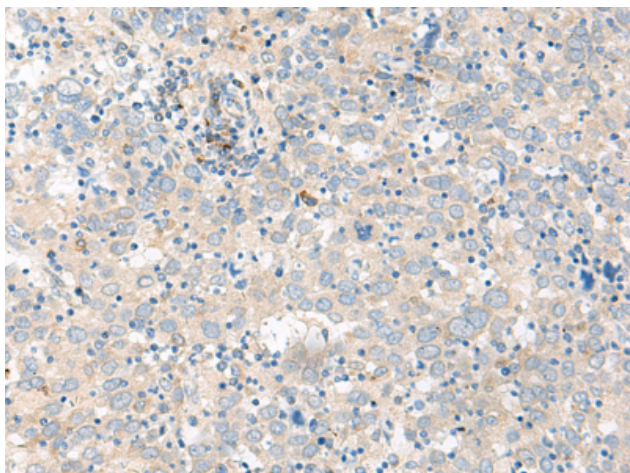
Purification: Antigen affinity purification

Species Reactivity: Human, Mouse

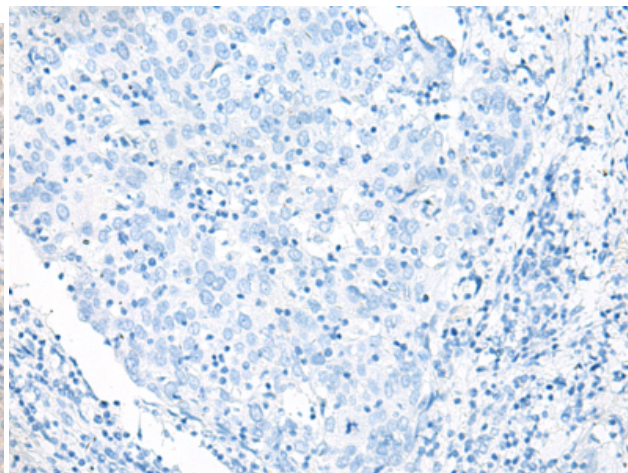
Constituents: PBS (without Mg²⁺ and Ca²⁺), pH 7.4, 150 mM NaCl, 0.05% Sodium Azide and 40% glycerol

Research Areas: Signal Transduction, Neuroscience

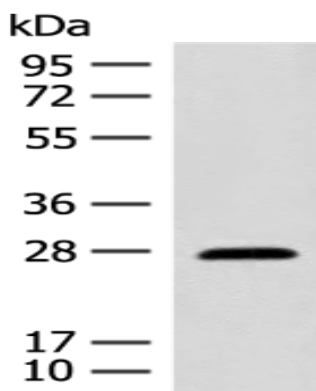
Storage & Shipping: Store at -20°C. Avoid repeated freezing and thawing



Immunohistochemistry analysis of paraffin embedded Human cervical cancer tissue using 222070(GUCA1B Antibody) at a dilution of 1/45(Cell membrane).



In comparison with the IHC on the left, the same paraffin-embedded Human cervical cancer tissue is first treated with the synthetic peptide and then with 222070(Anti-GUCA1B Antibody) at dilution 1/45.



Gel: 12%SDS-PAGE, Lysate: 40 μ g;
Lane: Mouse eye tissue lysate;
Primary antibody: 222070(GUCA1B Antibody) at dilution 1/500;
Secondary antibody: Goat anti rabbit IgG at 1/8000 dilution;
Exposure time: 10 seconds