

GUCA2A RABBIT PAB

Cat.#: S215931

Product Name: Anti-GUCA2A Rabbit Polyclonal Antibody

Synonyms: GUCA2; STARA; GCAP-I

UNIPROT ID: Q02747 (Gene Accession - NP_291031)

Background: Endogenous activator of intestinal guanylate cyclase. It stimulates this enzyme through the same receptor binding region as the heat-stable enterotoxins.

Immunogen: Synthetic peptide of human GUCA2A

Applications: ELISA, WB, IHC

Recommended Dilutions: IHC: 30-150;WB: 200-1000;ELISA: 5000-10000

Host Species: Rabbit

Clonality: Rabbit Polyclonal

Isotype: Immunogen-specific rabbit IgG

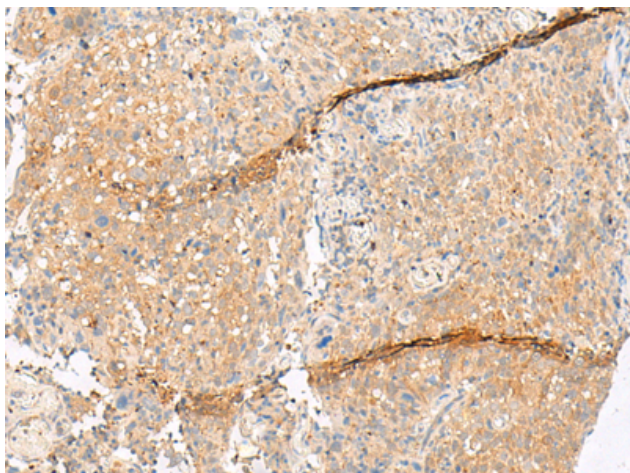
Purification: Antigen affinity purification

Species Reactivity: Human

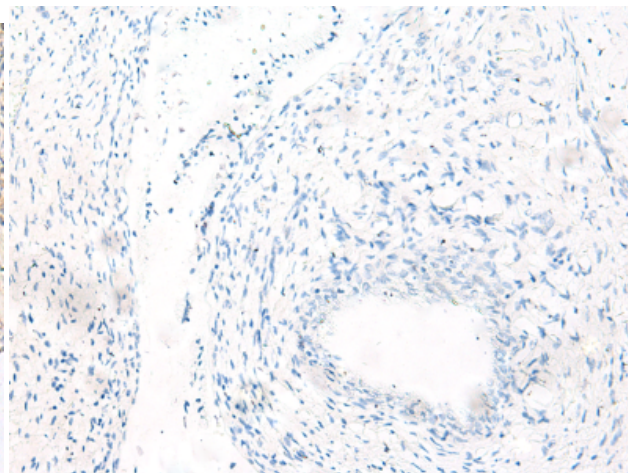
Constituents: PBS (without Mg²⁺ and Ca²⁺), pH 7.4, 150 mM NaCl, 0.05% Sodium Azide and 40% glycerol

Research Areas: Signal Transduction

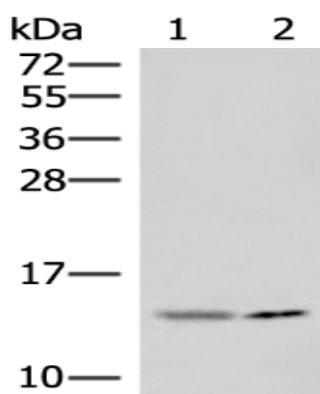
Storage & Shipping: Store at -20°C. Avoid repeated freezing and thawing



Immunohistochemistry analysis of paraffin embedded Human cervical cancer tissue using 215931(GUCA2A Antibody) at a dilution of 1/45(Secreted).



In comparison with the IHC on the left, the same paraffin-embedded Human cervical cancer tissue is first treated with the synthetic peptide and then with 215931(Anti-GUCA2A Antibody) at dilution 1/45.



Gel: 12%SDS-PAGE, Lysate: 40 µg;
 Lane 1-2: Mouse small intestines tissue and K562 cell lysates;
 Primary antibody: 215931(GUCA2A Antibody) at dilution 1/550;
 Secondary antibody: Goat anti rabbit IgG at 1/8000 dilution;
 Exposure time: 10 minutes