

GUCY1B2 RABBIT PAB

Cat.#: S222155

Product Name: Anti-GUCY1B2 Rabbit Polyclonal Antibody

Synonyms: GC-SB2

UNIPROT ID: O75343 (Gene Accession - Hs.411573)

Background: Guanylate Cyclase is a heterodimer of an alpha and a beta chain. Its enzymatic activity transforms GTP to GMP releasing a diphosphate. It binds 1 or 2 hemes per heterodimer. It is activated by nitric oxide in the presence of magnesium or manganese ions. There are two types of guanylate cyclase: soluble form and membrane-associated receptor form.

Immunogen: Synthetic peptide of human GUCY1B2

Applications: ELISA, IHC

Recommended Dilutions: IHC: 20-100; ELISA: 5000-10000

Host Species: Rabbit

Clonality: Rabbit Polyclonal

Isotype: Immunogen-specific rabbit IgG

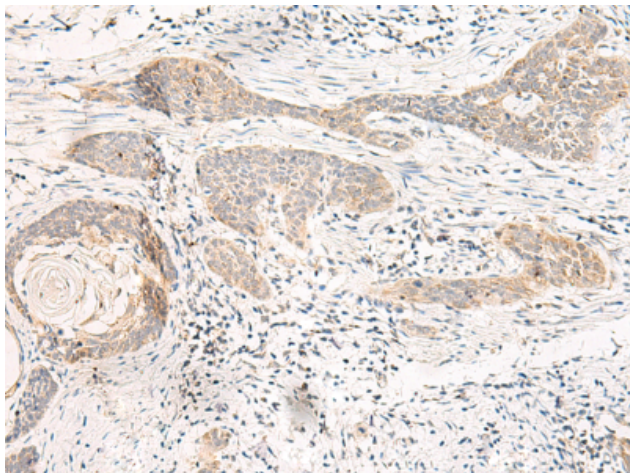
Purification: Antigen affinity purification

Species Reactivity: Human

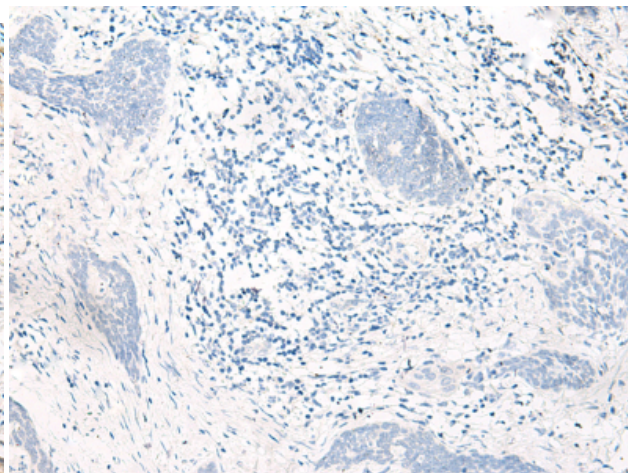
Constituents: PBS (without Mg²⁺ and Ca²⁺), pH 7.4, 150 mM NaCl, 0.05% Sodium Azide and 40% glycerol

Research Areas: Signal Transduction

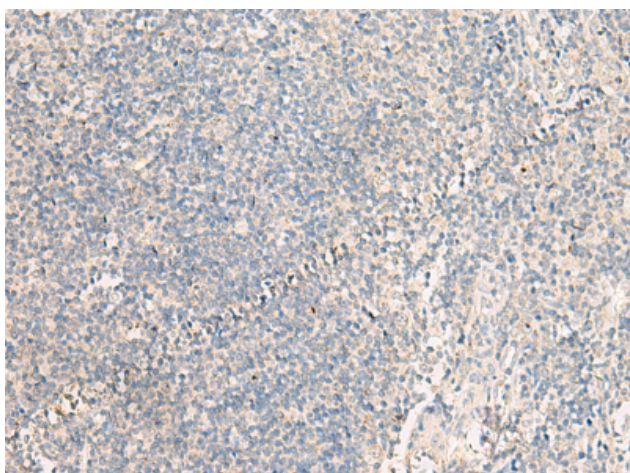
Storage & Shipping: Store at -20°C. Avoid repeated freezing and thawing



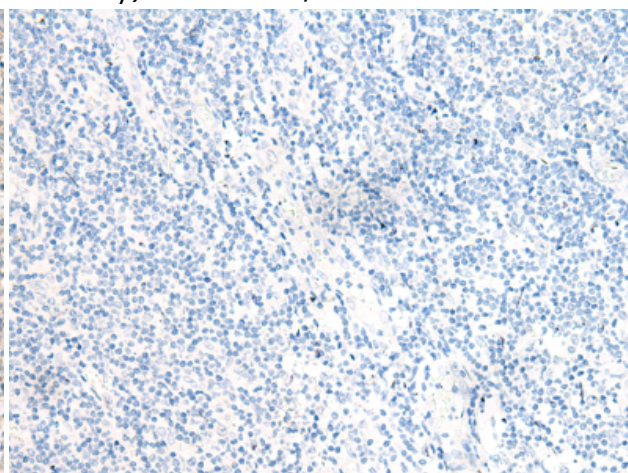
Immunohistochemistry analysis of paraffin embedded Human esophagus cancer tissue using 222155(GUCY1B2 Antibody) at a dilution of 1/20(Cytoplasm).



In comparison with the IHC on the left, the same paraffin-embedded Human esophagus cancer tissue is first treated with the synthetic peptide and then with 222155(Anti-GUCY1B2 Antibody) at dilution 1/20.



The image on the left is immunohistochemistry of paraffin-embedded Human tonsil tissue using 222155(Anti-GUCY1B2 Antibody) at a dilution of 1/20.



In comparison with the IHC on the left, the same paraffin-embedded Human tonsil tissue is first treated with synthetic peptide and then with D264142(Anti-GUCY1B2 Antibody) at dilution 1/20.