

GUCY2C (ICTCAR-CRC) MAB

Cat.#: 28581

Product Name: Anti-GUCY2C (ICTCAR-CRC) Monoclonal Antibody

Synonyms: DIAR6, GC-C, GUC2C, MECIL, MUCIL, STAR

Description: Anti-GUCY2C (ICTCAR-CRC) Monoclonal Antibody

Background: Research grade biosimilar. Not for use in therapeutic or diagnostic procedures for humans or animals.

Applications: ELISA, Flow Cyt

Recommended Dilutions: ELISA 1:5000-10000, Flow Cyt 1:100

Host Species: Humanized

Isotype: IgG1

Purification: Purified from cell culture supernatant by affinity chromatography

Species Reactivity: Human GUCY2C

Constituents: Lyophilized from sterile PBS, pH 7.4. 5 % – 8% trehalose is added as protectants before lyophilization.

Storage & Shipping: Store at -20°C to -80°C for 12 months in lyophilized form. After reconstitution, if not intended for use within a month, aliquot and store at -80°C (Avoid repeated freezing and thawing).

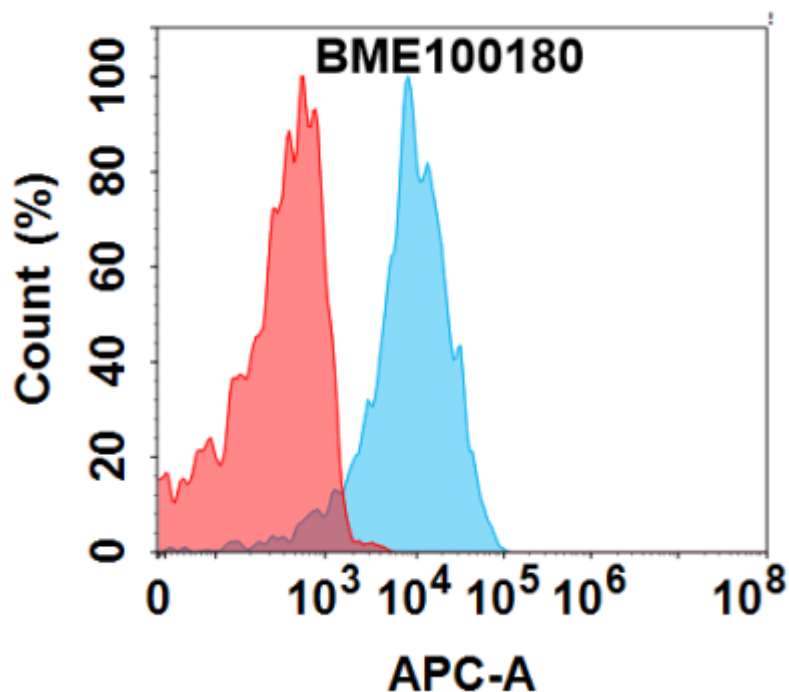


Figure 1. Flow cytometry analysis with 1 μ g/mL Anti-GUCY2C (ICTCAR-CRC) mAb (28581) on Expi293 cells transfected with Human GUCY2C protein (Blue histogram) or Expi293 transfected with irrelevant protein (Red histogram).