

GZMH RABBIT PAB

Cat.#: S221349

Product Name: Anti-GZMH Rabbit Polyclonal Antibody

Synonyms: CCP-X; CGL-2; CSP-C; CTLA1; CTSL2

UNIPROT ID: P20718 (Gene Accession - NP_219491)

Background: This gene encodes a member of the peptidase S1 family of serine proteases. Alternative splicing results in multiple transcript variants, at least one of which encodes a preproprotein that is proteolytically processed to generate a chymotrypsin-like protease. This protein is reported to be constitutively expressed in the NK (natural killer) cells of the immune system and may play a role in the cytotoxic arm of the innate immune response by inducing target cell death and by directly cleaving substrates in pathogen-infected cells. This gene is present in a gene cluster with another member of the granzyme subfamily on chromosome 14. [provided by RefSeq, Nov 2015]

Immunogen: Synthetic peptide of human GZMH

Applications: ELISA, WB, IHC

Recommended Dilutions: IHC: 50-200;WB: 1000-5000;ELISA: 5000-10000

Host Species: Rabbit

Clonality: Rabbit Polyclonal

Isotype: Immunogen-specific rabbit IgG

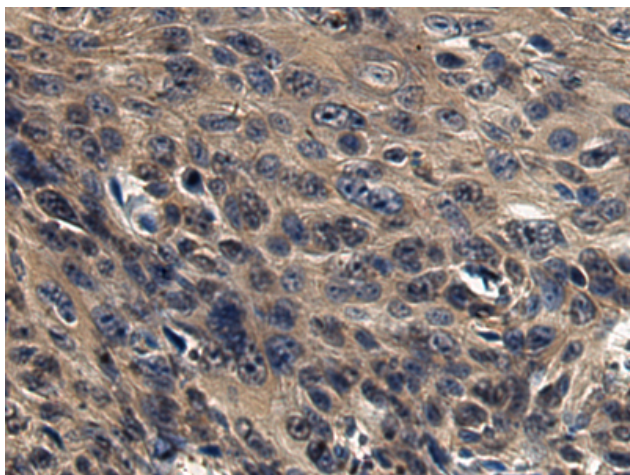
Purification: Antigen affinity purification

Species Reactivity: Human

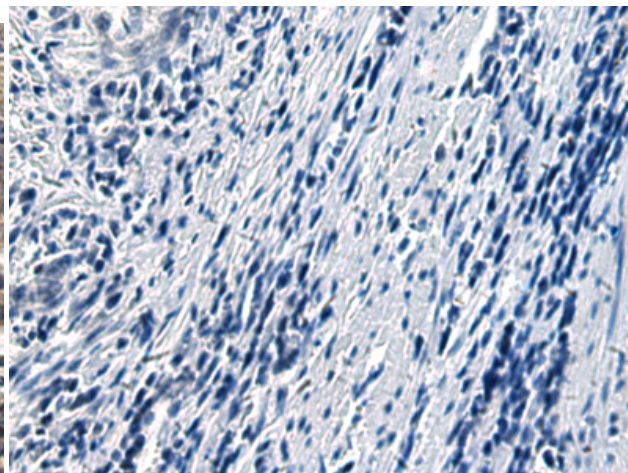
Constituents: PBS (without Mg²⁺ and Ca²⁺), pH 7.4, 150 mM NaCl, 0.05% Sodium Azide and 40% glycerol

Research Areas: Cancer, Immunology

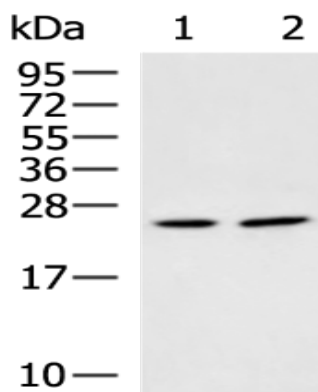
Storage & Shipping: Store at -20°C. Avoid repeated freezing and thawing



Immunohistochemistry analysis of paraffin embedded Human esophagus cancer using 221349(GZMH Antibody) at a dilution of 1/75(Cytoplasm).



In comparison with the IHC on the left, the same paraffin-embedded Human esophagus cancer is first treated with the synthetic peptide and then with 221349(Anti-GZMH Antibody) at dilution 1/75.



Gel: 12%SDS-PAGE, Lysate: 40 µg;
Lane 1-2: HeLa and 231 cell lysates;
Primary antibody: 221349(GZMH Antibody) at dilution 1/1000;
Secondary antibody: HRP-conjugated Goat anti rabbit IgG at 1/5000 dilution;
Exposure time: 1 minute