

H2BC1 RABBIT PAB

Cat.#: S221891

Product Name: Anti-H2BC1 Rabbit Polyclonal Antibody

Synonyms: STBP; TH2B; H2BFU; TSH2B; hTSH2B; TSH2B.1; HIST1H2BA; bA317E16.3

UNIPROT ID: Q96A08 (Gene Accession - NP_733759)

Background: Histones are basic nuclear proteins that are responsible for the nucleosome structure of the chromosomal fiber in eukaryotes. Nucleosomes consist of approximately 146 bp of DNA wrapped around a histone octamer composed of pairs of each of the four core histones (H2A, H2B, H3, and H4). The chromatin fiber is further compacted through the interaction of a linker histone, H1, with the DNA between the nucleosomes to form higher order chromatin structures. This gene is intronless and encodes a replication-dependent histone that is a testis/sperm-specific member of the histone H2B family. Transcripts from this gene contain a palindromic termination element. [provided by RefSeq, Aug 2015]

Immunogen: Synthetic peptide of human H2BC1

Applications: ELISA, WB, IHC

Recommended Dilutions: IHC: 50-300;WB: 500-2000;ELISA: 5000-10000

Host Species: Rabbit

Clonality: Rabbit Polyclonal

Isotype: Immunogen-specific rabbit IgG

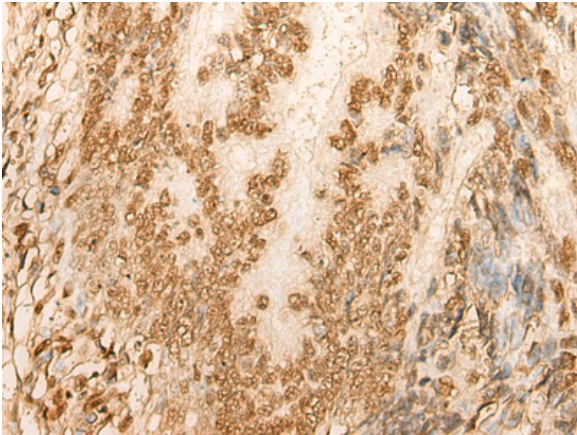
Purification: Antigen affinity purification

Species Reactivity: Human, Mouse, Rat

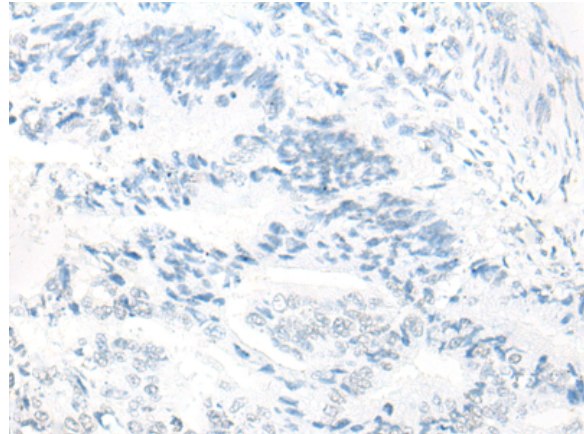
Constituents: PBS (without Mg²⁺ and Ca²⁺), pH 7.4, 150 mM NaCl, 0.05% Sodium Azide and 40% glycerol

Research Areas: Epigenetics and Nuclear Signaling

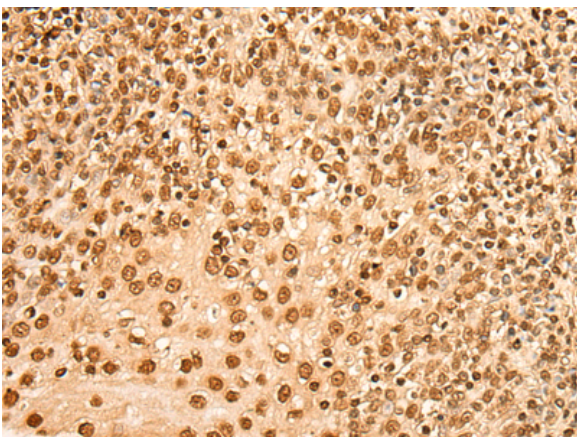
Storage & Shipping: Store at -20°C. Avoid repeated freezing and thawing



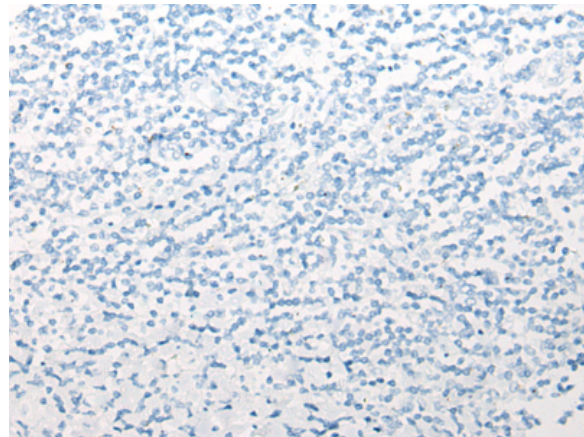
Immunohistochemistry analysis of paraffin embedded Human colorectal cancer tissue using 221891(H2BC1 Antibody) at a dilution of 1/45(Nucleus).



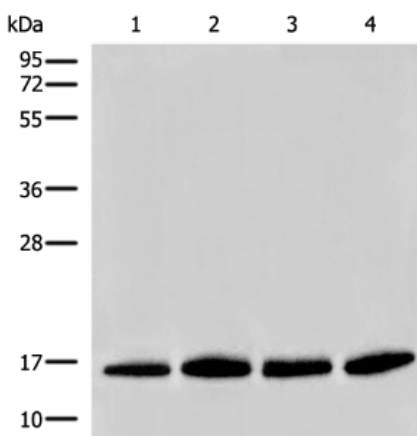
In comparison with the IHC on the left, the same paraffin-embedded Human colorectal cancer tissue is first treated with the synthetic peptide and then with 221891(Anti-H2BC1 Antibody) at dilution 1/45.



The image on the left is immunohistochemistry of paraffin-embedded Human tonsil tissue using 221891(Anti-H2BC1 Antibody) at a dilution of 1/45.



In comparison with the IHC on the left, the same paraffin-embedded Human tonsil tissue is first treated with synthetic peptide and then with D263694(Anti-H2BC1 Antibody) at dilution 1/45.



Gel: 12%SDS-PAGE, Lysate: 40 µg;
 Lane 1-4: Human prostate tissue, PC-3, A549 and TM4 cell lysates;
 Primary antibody: 221891(H2BC1 Antibody) at dilution 1/500;
 Secondary antibody: Goat anti rabbit IgG at 1/8000 dilution;
 Exposure time: 3 seconds



Product Description

Pioneering GTPase and Oncogene Product Development since 2010
