

## HAUS2 RABBIT PAB

**Cat.#:** S221723

**Product Name:** Anti-HAUS2 Rabbit Polyclonal Antibody

**Synonyms:** CEP27; C15orf25; HsT17025

**UNIPROT ID:** Q9NVX0 (Gene Accession - NP\_060567 )

**Background:** The protein encoded by this gene is a subunit of the augmin complex. The augmin complex plays a role in microtubule attachment to the kinetochore and central spindle formation.

**Immunogen:** Synthetic peptide of human HAUS2

**Applications:** ELISA, WB, IHC

**Recommended Dilutions:** IHC: 50-200;WB: 500-2000;ELISA: 5000-10000

**Host Species:** Rabbit

**Clonality:** Rabbit Polyclonal

**Isotype:** Immunogen-specific rabbit IgG

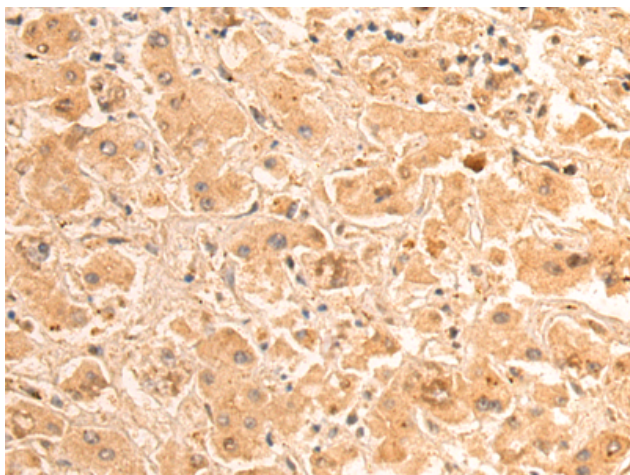
**Purification:** Antigen affinity purification

**Species Reactivity:** Human, Mouse

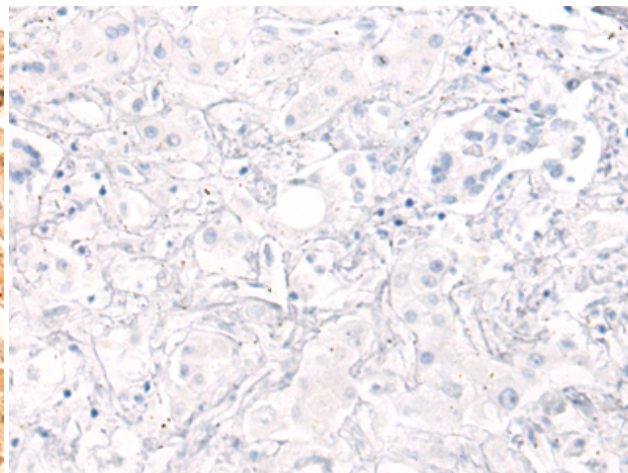
**Constituents:** PBS (without Mg<sup>2+</sup> and Ca<sup>2+</sup>), pH 7.4, 150 mM NaCl, 0.05% Sodium Azide and 40% glycerol

**Research Areas:** Epigenetics and Nuclear Signaling

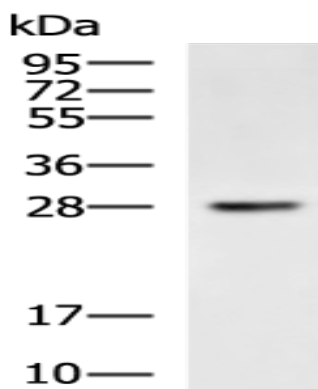
**Storage & Shipping:** Store at -20°C. Avoid repeated freezing and thawing



Immunohistochemistry analysis of paraffin embedded Human liver cancer tissue using 221723 (HAUS2 Antibody) at a dilution of 1/55 (Cytoplasm).



In comparison with the IHC on the left, the same paraffin-embedded Human liver cancer tissue is first treated with the synthetic peptide and then with 221723 (Anti-HAUS2 Antibody) at dilution 1/55.



Gel: 12% SDS-PAGE, Lysate: 40  $\mu$ g;  
Lane: Mouse pancreas tissue lysate;  
Primary antibody: 221723 (HAUS2 Antibody) at dilution 1/400;  
Secondary antibody: HRP-conjugated Goat anti rabbit IgG at 1/5000 dilution;  
Exposure time: 2 minutes