

HCE RABBIT MAB

Cat.#: N263354

Product Name: Anti-HCE Rabbit Monoclonal Antibody

Synonyms: HCE; HCE1; hCAP; CAP1A

UNIPROT ID: O60942

Background: Bifunctional mRNA-capping enzyme exhibiting RNA 5'-triphosphatase activity in the N-terminal part and mRNA guanylyltransferase activity in the C-terminal part. Catalyzes the first two steps of cap formation: by removing the gamma-phosphate from the 5'-triphosphate end of nascent mRNA to yield a diphosphate end, and by transferring the gmp moiety of GTP to the 5'-diphosphate terminus.

Immunogen: Recombinant protein of human HCE

Applications: WB, ICC/IF, IP

Recommended Dilutions: WB: 1/500-1/1000 IF: 1/50-1/200 IP: 1/20

Host Species: Rabbit

Clonality: Rabbit Monoclonal

Clone ID: R06-7D6

MW: Calculated MW: 69 kDa; Observed MW: 69 kDa

Isotype: IgG

Purification: Affinity Purified

Species Reactivity: Human, Rat

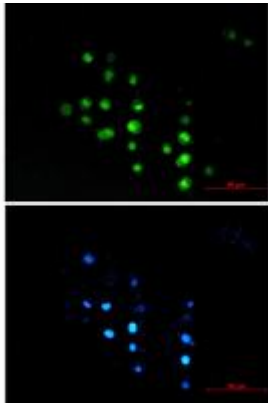
Conjugation: Unconjugated

Modification: Unmodified

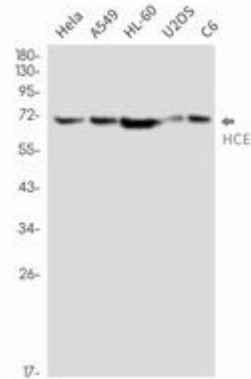
Constituents: PBS (without Mg²⁺ and Ca²⁺), pH 7.3 containing 50% glycerol, 0.5% BSA and 0.02% sodium azide

Research Areas: Epigenetics and Nuclear Signaling

Storage & Shipping: Store at -20°C. Avoid repeated freezing and thawing



Immunocytochemistry analysis of HCE (green) in MCF-7 using HCE antibody, and DAPI (blue)



Western blot analysis of HCE in HeLa, A549, HL-60, U2OS, C6 lysates using HCE antibody.