

HCRT(OREXIN-B) RABBIT PAB

Cat.#: S221833

Product Name: Anti-HCRT(Orexin-B) Rabbit Polyclonal Antibody

Synonyms: OX; PPOX; NRCLP1

UNIPROT ID: O43612 (Gene Accession - NP_001515)

Background: This gene encodes a hypothalamic neuropeptide precursor protein that gives rise to two mature neuropeptides, orexin A and orexin B, by proteolytic processing. Orexin A and orexin B, which bind to orphan G-protein coupled receptors HCRTR1 and HCRTR2, function in the regulation of sleep and arousal. This neuropeptide arrangement may also play a role in feeding behavior, metabolism, and homeostasis.

Immunogen: Synthetic peptide of human HCRT(Orexin-B)

Applications: ELISA, IHC

Recommended Dilutions: IHC: 20-100; ELISA: 5000-10000

Host Species: Rabbit

Clonality: Rabbit Polyclonal

Isotype: Immunogen-specific rabbit IgG

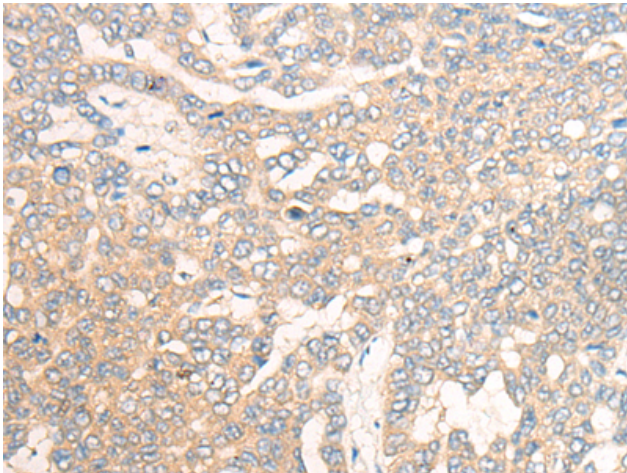
Purification: Antigen affinity purification

Species Reactivity: Human, Mouse, Rat

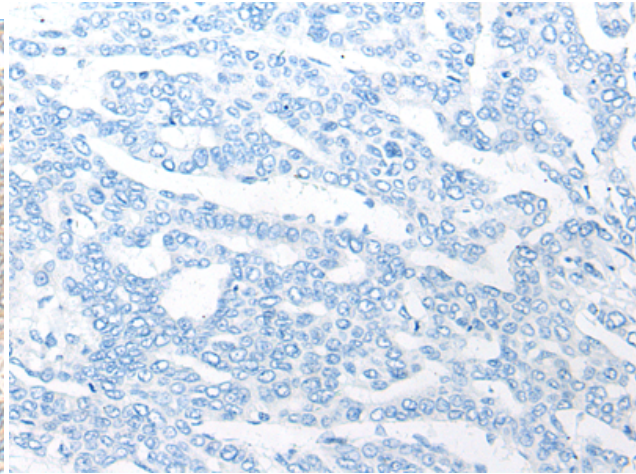
Constituents: PBS (without Mg²⁺ and Ca²⁺), pH 7.4, 150 mM NaCl, 0.05% Sodium Azide and 40% glycerol

Research Areas: Metabolism, Neuroscience

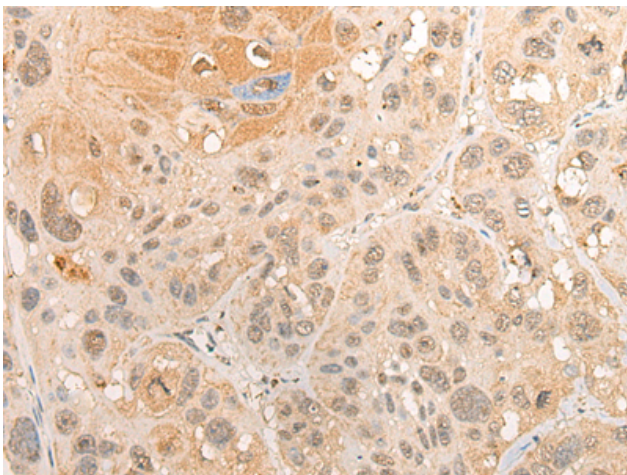
Storage & Shipping: Store at -20°C. Avoid repeated freezing and thawing



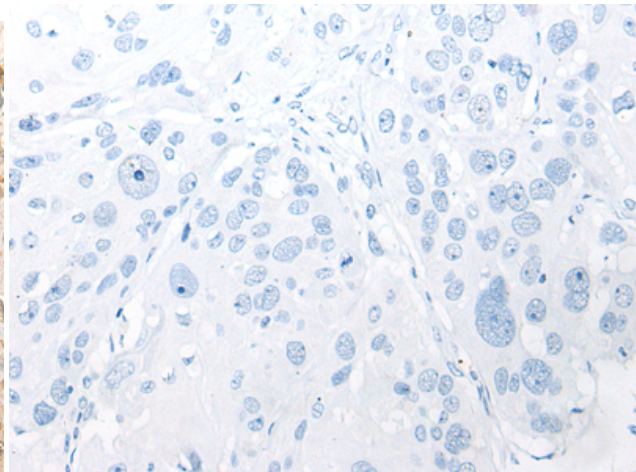
Immunohistochemistry analysis of paraffin embedded Human liver cancer tissue using 221833(HCRT(Orexin-B) Antibody) at a dilution of 1/20(Cytoplasm or Nucleus).



In comparison with the IHC on the left, the same paraffin-embedded Human liver cancer tissue is first treated with the synthetic peptide and then with 221833(Anti-HCRT(Anti-Orexin-B) Antibody) at dilution 1/20.



The image on the left is immunohistochemistry of paraffin-embedded Human esophagus cancer tissue using 221833(Anti-HCRT(Anti-Orexin-B) Antibody) at a dilution of 1/20.



In comparison with the IHC on the left, the same paraffin-embedded Human esophagus cancer tissue is first treated with synthetic peptide and then with D263595(Anti-HCRT(Anti-Orexin-B) Antibody) at dilution 1/20.