

## HCRTR1 RABBIT PAB

**Cat.#:** S220159

**Product Name:** Anti-HCRTR1 Rabbit Polyclonal Antibody

**Synonyms:** OX1R

**UNIPROT ID:** O43613 (Gene Accession - NP\_001516 )

**Background:** The protein encoded by this gene is a G-protein coupled receptor involved in the regulation of feeding behavior. The encoded protein selectively binds the hypothalamic neuropeptide orexin A. A related gene (HCRTR2) encodes a G-protein coupled receptor that binds orexin A and orexin B.

**Immunogen:** Synthetic peptide of human HCRTR1

**Applications:** ELISA, IHC

**Recommended Dilutions:** IHC: 100-300; ELISA: 2000-10000

**Host Species:** Rabbit

**Clonality:** Rabbit Polyclonal

**Isotype:** Immunogen-specific rabbit IgG

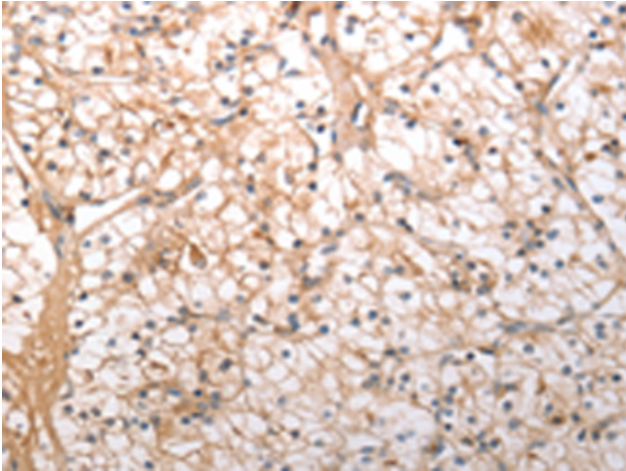
**Purification:** Antigen affinity purification

**Species Reactivity:** Human, Mouse, Rat

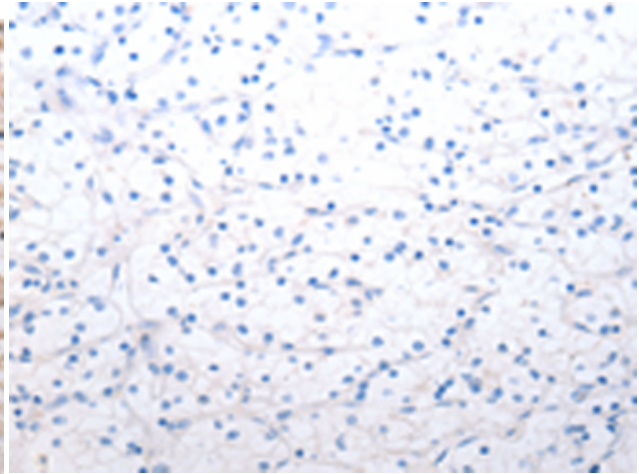
**Constituents:** PBS (without Mg<sup>2+</sup> and Ca<sup>2+</sup>), pH 7.4, 150 mM NaCl, 0.05% Sodium Azide and 40% glycerol

**Research Areas:** Signal Transduction, Metabolism, Neuroscience

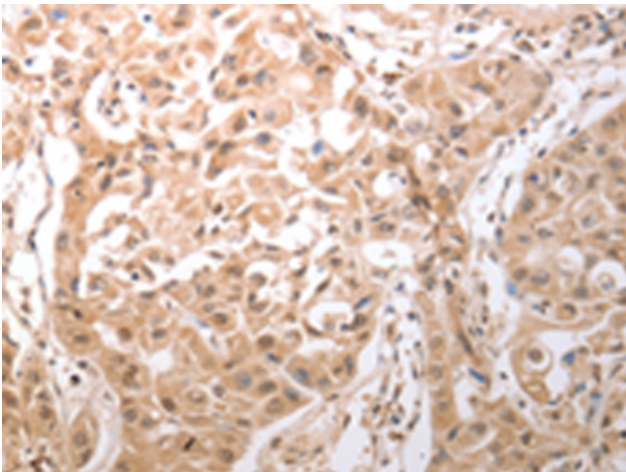
**Storage & Shipping:** Store at -20°C. Avoid repeated freezing and thawing



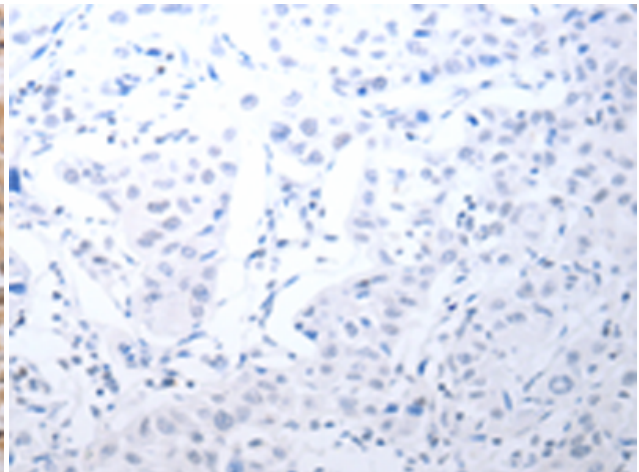
Immunohistochemistry analysis of paraffin embedded Human renal cancer tissue using 220159(HCRTR1 Antibody) at a dilution of 1/100(Cytoplasm).



In comparison with the IHC on the left, the same paraffin-embedded Human renal cancer tissue is first treated with the synthetic peptide and then with 220159(Anti-HCRTR1 Antibody) at dilution 1/100.



The image on the left is immunohistochemistry of paraffin-embedded Human lung cancer tissue using 220159(Anti-HCRTR1 Antibody) at a dilution of 1/100.



In comparison with the IHC on the left, the same paraffin-embedded Human lung cancer tissue is first treated with synthetic peptide and then with D261060(Anti-HCRTR1 Antibody) at dilution 1/100.