

## HDAC1 RABBIT PAB

**Cat.#:** S219849

**Product Name:** Anti-HDAC1 Rabbit Polyclonal Antibody

**Synonyms:** HD1, RPD3, GON-10, RPD3L1

**UNIPROT ID:** Q13547 (Gene Accession - NP\_004955 )

**Background:** Histone acetylation and deacetylation, catalyzed by multisubunit complexes, play a key role in the regulation of eukaryotic gene expression. The protein encoded by this gene belongs to the histone deacetylase/acuc/apha family and is a component of the histone deacetylase complex. It also interacts with retinoblastoma tumor-suppressor protein and this complex is a key element in the control of cell proliferation and differentiation. Together with metastasis-associated protein-2, it deacetylates p53 and modulates its effect on cell growth and apoptosis.

**Immunogen:** Synthetic peptide of human HDAC1

**Applications:** ELISA, WB, IHC

**Recommended Dilutions:** IHC: 25-100;WB: 200-1000;ELISA: 1000-5000

**Host Species:** Rabbit

**Clonality:** Rabbit Polyclonal

**Isotype:** Immunogen-specific rabbit IgG

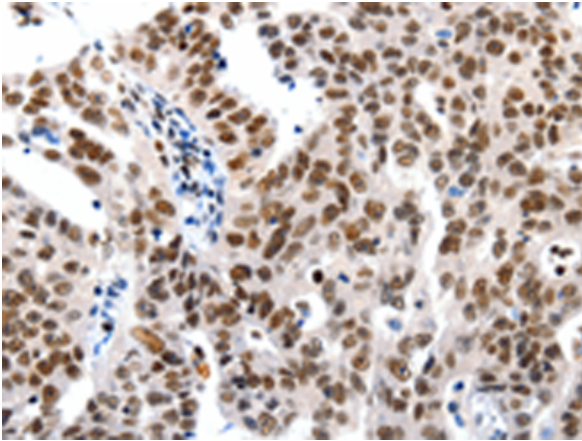
**Purification:** Antigen affinity purification

**Species Reactivity:** Human, Mouse, Rat

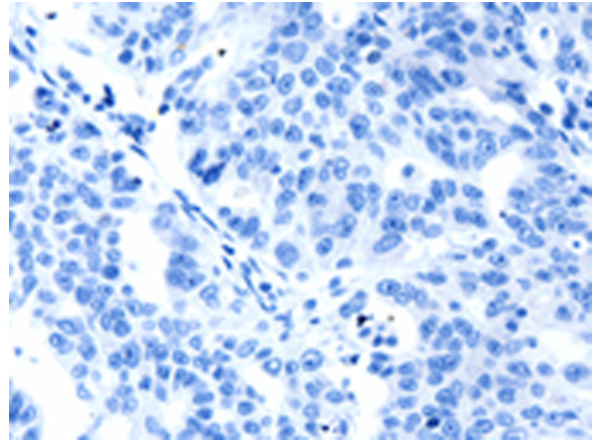
**Constituents:** PBS (without Mg<sup>2+</sup> and Ca<sup>2+</sup>), pH 7.4, 150 mM NaCl, 0.05% Sodium Azide and 40% glycerol

**Research Areas:** Epigenetics and Nuclear Signaling, Cardiovascular, Signal Transduction

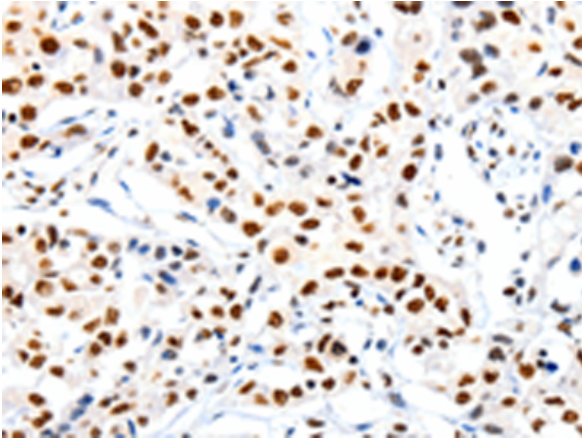
**Storage & Shipping:** Store at -20°C. Avoid repeated freezing and thawing



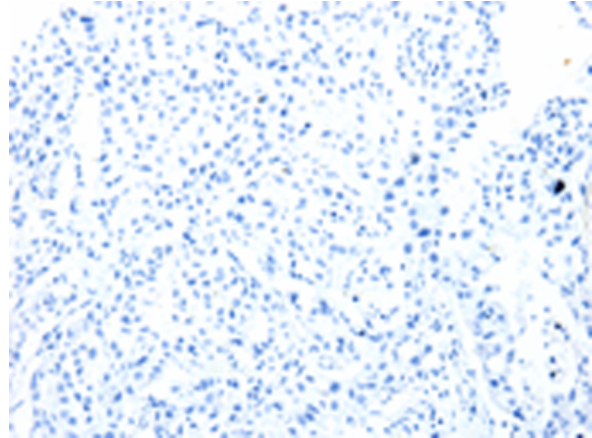
Immunohistochemistry analysis of paraffin embedded Human ovarian cancer tissue using 219849(HDAC1 Antibody) at a dilution of 1/20(Cytoplasm, Nucleus).



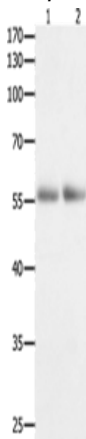
In comparison with the IHC on the left, the same paraffin-embedded Human ovarian cancer tissue is first treated with the synthetic peptide and then with 219849(Anti-HDAC1 Antibody) at dilution 1/20.



The image on the left is immunohistochemistry of paraffin-embedded Human lung cancer tissue using 219849(Anti-HDAC1 Antibody) at a dilution of 1/20.



In comparison with the IHC on the left, the same paraffin-embedded Human lung cancer tissue is first treated with synthetic peptide and then with D260479(Anti-HDAC1 Antibody) at dilution 1/20.



Gel: 10%SDS-PAGE, Lysate: 40 µg;  
Lane 1-2: Human colon tissue, Human kidney cancer tissue;  
Primary antibody: 219849(HDAC1 Antibody) at dilution 1/400;  
Secondary antibody: Goat anti rabbit IgG at 1/8000 dilution;  
Exposure time: 2 minutes



# Product Description

Pioneering GTPase and Oncogene Product Development since 2010

---