

HECTD1 RABBIT PAB

Cat.#: S222172

Product Name: Anti-HECTD1 Rabbit Polyclonal Antibody

Synonyms: EULIR

UNIPROT ID: Q9ULT8 (Gene Accession - NP_056197)

Background: Probable E3 ubiquitin-protein ligase which accepts ubiquitin from an E2 ubiquitin-conjugating enzyme in the form of a thioester and then directly transfers the ubiquitin to targeted substrates. May be required for development of the head mesenchyme and neural tube closure.

Immunogen: Synthetic peptide of human HECTD1

Applications: ELISA, IHC

Recommended Dilutions: IHC: Oct-50; ELISA: 5000-10000

Host Species: Rabbit

Clonality: Rabbit Polyclonal

Isotype: Immunogen-specific rabbit IgG

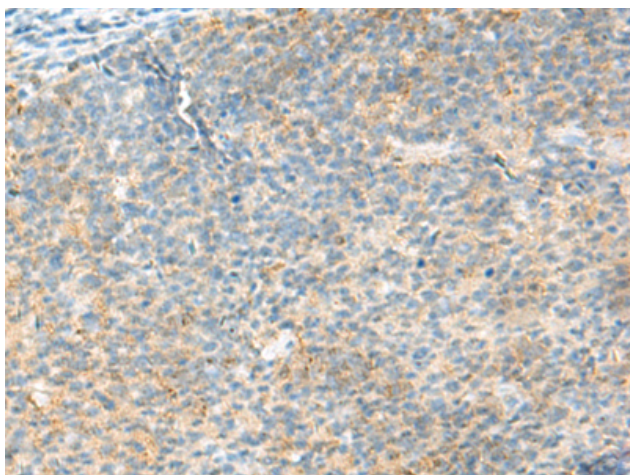
Purification: Antigen affinity purification

Species Reactivity: Human, Mouse

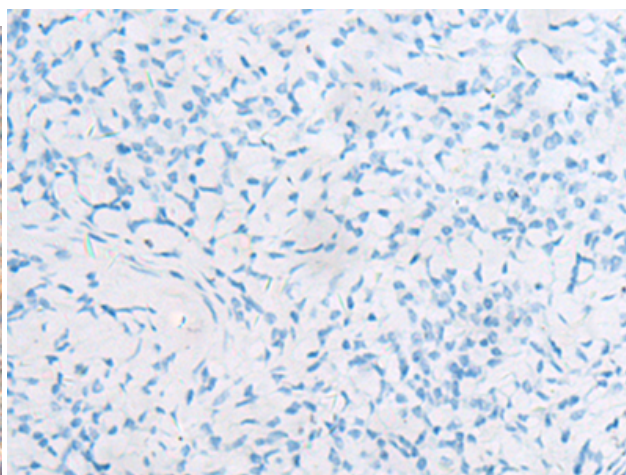
Constituents: PBS (without Mg²⁺ and Ca²⁺), pH 7.4, 150 mM NaCl, 0.05% Sodium Azide and 40% glycerol

Research Areas: Epigenetics and Nuclear Signaling, Cell Biology

Storage & Shipping: Store at -20°C. Avoid repeated freezing and thawing



Immunohistochemistry analysis of paraffin embedded Human tonsil tissue using 222172(HECTD1 Antibody) at a dilution of 1/30(Cytoplasm).



In comparison with the IHC on the left, the same paraffin-embedded Human tonsil tissue is first treated with the synthetic peptide and then with 222172(Anti-HECTD1 Antibody) at dilution 1/30.