

HELT RABBIT PAB

Cat.#: S222174

Product Name: Anti-HELT Rabbit Polyclonal Antibody

Synonyms: Mgn; HESL; HCM1228; bHLHb44

UNIPROT ID: A6NFD8 (Gene Accession - NP_001287710)

Background: Transcriptional repressor which binds preferentially to the canonical E box sequence 5'-CACGCG-3'.

Immunogen: Synthetic peptide of human HELT

Applications: ELISA, WB, IHC

Recommended Dilutions: IHC: 20-100;WB: 200-1000;ELISA: 5000-10000

Host Species: Rabbit

Clonality: Rabbit Polyclonal

Isotype: Immunogen-specific rabbit IgG

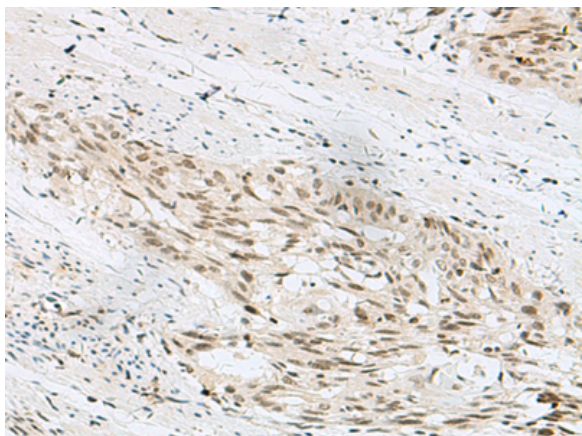
Purification: Antigen affinity purification

Species Reactivity: Human, Mouse

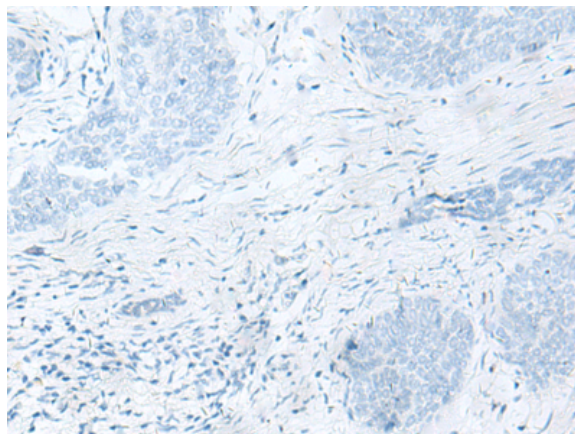
Constituents: PBS (without Mg²⁺ and Ca²⁺), pH 7.4, 150 mM NaCl, 0.05% Sodium Azide and 40% glycerol

Research Areas: Epigenetics and Nuclear Signaling

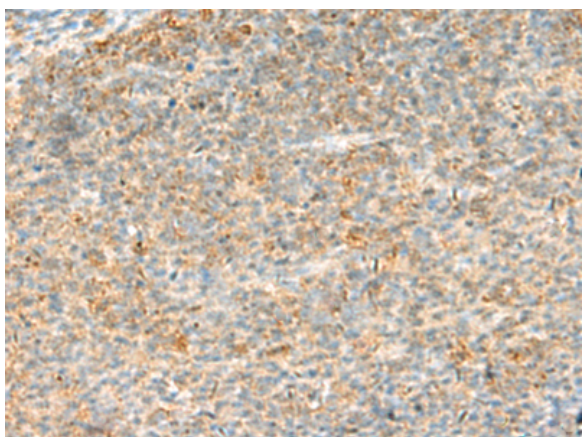
Storage & Shipping: Store at -20°C. Avoid repeated freezing and thawing



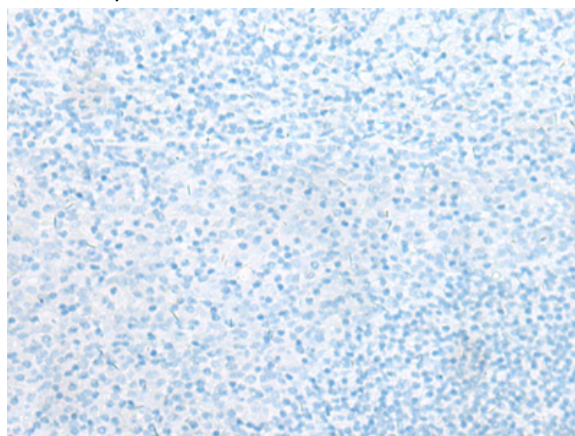
Immunohistochemistry analysis of paraffin embedded Human esophagus cancer tissue using 222174(HELT Antibody) at a dilution of 1/30(Nucleus or Cytoplasm).



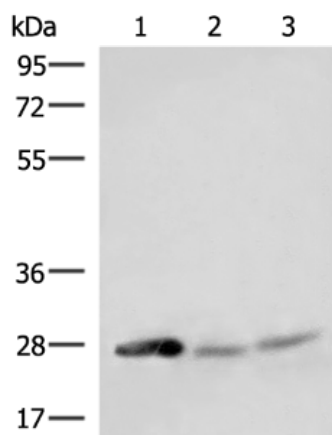
In comparison with the IHC on the left, the same paraffin-embedded Human esophagus cancer tissue is first treated with the synthetic peptide and then with 222174(Anti-HELT Antibody) at dilution 1/30.



The image on the left is immunohistochemistry of paraffin-embedded Human tonsil tissue using 222174(Anti-HELT Antibody) at a dilution of 1/30.



In comparison with the IHC on the left, the same paraffin-embedded Human tonsil tissue is first treated with synthetic peptide and then with D264169(Anti-HELT Antibody) at dilution 1/30.



Gel: 8%SDS-PAGE, Lysate: 40 µg;
 Lane 1-3: Mouse liver tissue, Mouse heart tissue and Mouse brain tissue lysates;
 Primary antibody: 222174(HELT Antibody) at dilution 1/350;
 Secondary antibody: Goat anti rabbit IgG at 1/8000 dilution;
 Exposure time: 5 minutes



Product Description

Pioneering GTPase and Oncogene Product Development since 2010
