

## HEXOKINASE I RABBIT MAB

**Cat.#:** N262323

**Product Name:** Anti-Hexokinase I Rabbit Monoclonal Antibody

**Synonyms:** HK1; Hexokinase-1; Brain form hexokinase; Hexokinase type I; HK I

**UNIPROT ID:** P19367

**Background:** Hexokinases I, II, and III are associated with the outer mitochondrial membrane and are critical for maintaining an elevated rate of aerobic glycolysis in cancer cells (Warburg Effect) in order to compensate for the increased energy demands associated with rapid cell growth and proliferation.

**Immunogen:** A synthetic peptide of human Hexokinase 1

**Applications:** WB,IHC-F,IHC-P,ICC/IF

**Recommended Dilutions:** WB: 1/500-1/1000 IHC: 1/50-1/100 IF: 1/50-1/200

**Host Species:** Rabbit

**Clonality:** Rabbit Monoclonal

**Clone ID:** R02-4A8

**MW:** Calculated MW: 102 kDa; Observed MW: 102 kDa

**Isotype:** IgG

**Purification:** Affinity Purified

**Species Reactivity:** Human,Mouse,Rat

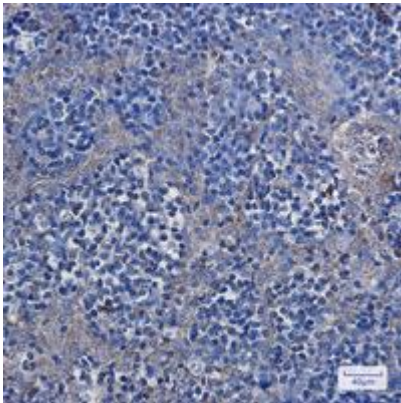
**Conjugation:** Unconjugated

**Modification:** Unmodified

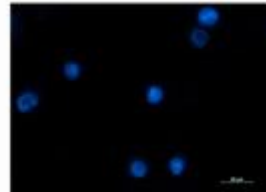
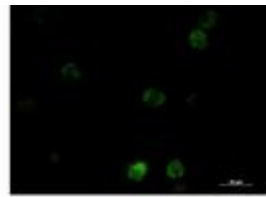
**Constituents:** PBS (without Mg<sup>2+</sup> and Ca<sup>2+</sup>), pH 7.3 containing 50% glycerol, 0.5% BSA and 0.02% sodium azide

**Research Areas:** Cardiovascular

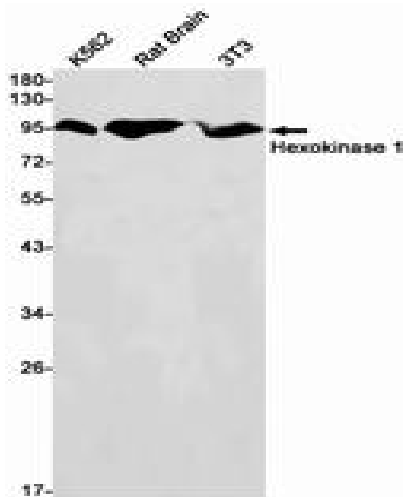
**Storage & Shipping:** Store at -20°C. Avoid repeated freezing and thawing



Immunohistochemistry analysis of paraffin-embedded Human tonsil using Hexokinase I antibody. High-pressure and temperature Sodium Citrate pH 6.0 was used for antigen retrieval.



Immunocytochemistry analysis of Hexokinase I (green) in K562 using Hexokinase I antibody, and DAPI (blue).



Western blot analysis of Hexokinase I in K562, rat Brain, 3T3 lysates using Hexokinase I antibody.