

## HHIPL2 RABBIT PAB

**Cat.#:** S219296

**Product Name:** Anti-HHIPL2 Rabbit Polyclonal Antibody

**Synonyms:** KIAA1822L

**UNIPROT ID:** Q6UWX4 (Gene Accession - BC015201 )

**Background:** The function of this protein remains unknown.

**Immunogen:** Fusion protein of human HHIPL2

**Applications:** ELISA, IHC

**Recommended Dilutions:** IHC: 50-200; ELISA: 5000-10000

**Host Species:** Rabbit

**Clonality:** Rabbit Polyclonal

**Isotype:** Immunogen-specific rabbit IgG

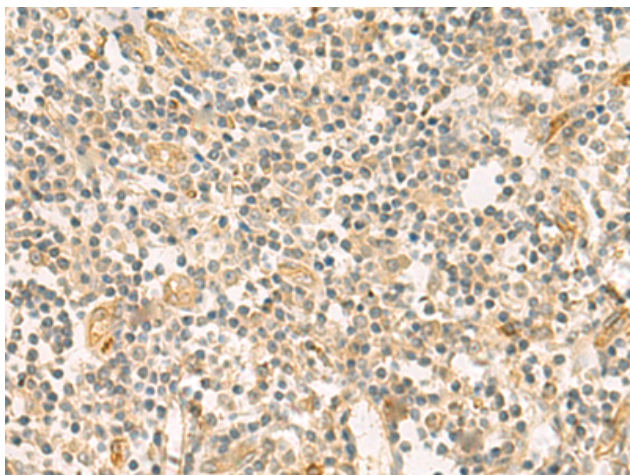
**Purification:** Antigen affinity purification

**Species Reactivity:** Human, Mouse

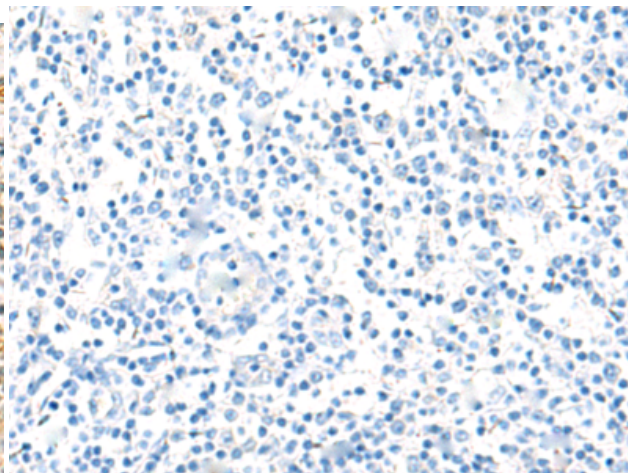
**Constituents:** PBS (without Mg<sup>2+</sup> and Ca<sup>2+</sup>), pH 7.4, 150 mM NaCl, 0.05% Sodium Azide and 40% glycerol

**Research Areas:** Signal Transduction

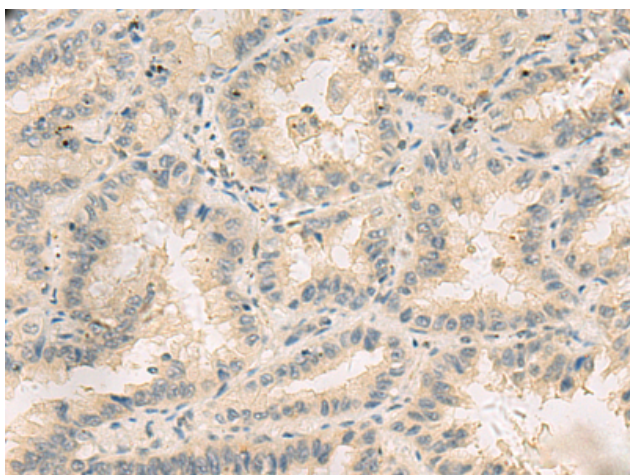
**Storage & Shipping:** Store at -20°C. Avoid repeated freezing and thawing



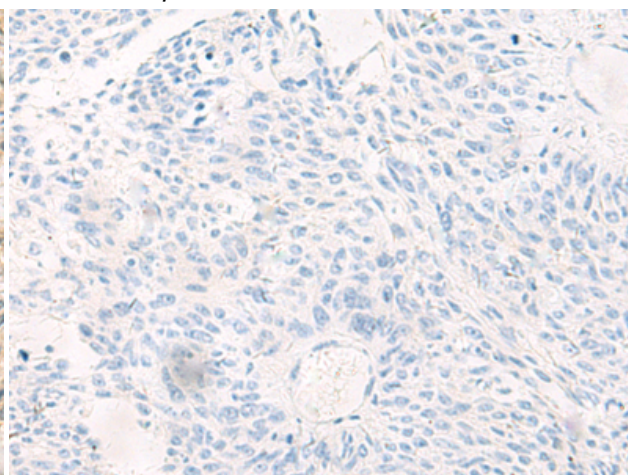
Immunohistochemistry analysis of paraffin embedded Human tonsil tissue using 219296(HHIPL2 Antibody) at a dilution of 1/55(Secreted).



In comparison with the IHC on the left, the same paraffin-embedded Human tonsil tissue is first treated with the fusion protein and then with 219296(Anti-HHIPL2 Antibody) at dilution 1/55.



The image on the left is immunohistochemistry of paraffin-embedded Human lung cancer tissue using 219296(Anti-HHIPL2 Antibody) at a dilution of 1/55.



In comparison with the IHC on the left, the same paraffin-embedded Human lung cancer tissue is first treated with fusion protein and then with D226229(Anti-HHIPL2 Antibody) at dilution 1/55.