

HIC1 RABBIT PAB

Cat.#: S222178

Product Name: Anti-HIC1 Rabbit Polyclonal Antibody

Synonyms: hic-1; ZBTB29; ZNF901

UNIPROT ID: Q14526 (Gene Accession - NP_001091672)

Background: This gene functions as a growth regulatory and tumor repressor gene. Hypermethylation or deletion of the region of this gene have been associated with tumors and the contiguous-gene syndrome, Miller-Dieker syndrome. Alternative splicing of this gene results in multiple transcript variants.

Immunogen: Synthetic peptide of human HIC1

Applications: ELISA, IHC

Recommended Dilutions: IHC: 50-100; ELISA: 5000-10000

Host Species: Rabbit

Clonality: Rabbit Polyclonal

Isotype: Immunogen-specific rabbit IgG

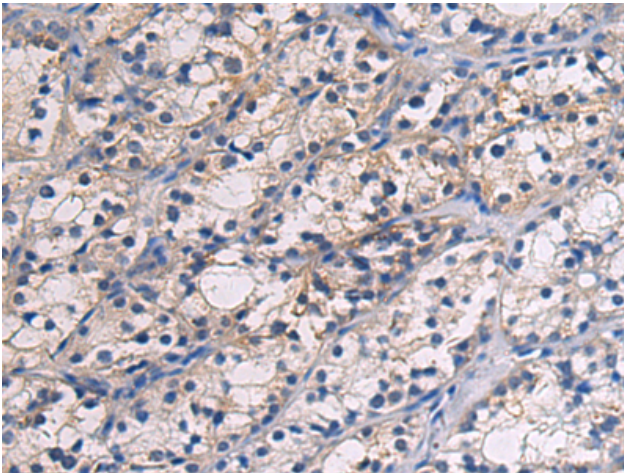
Purification: Antigen affinity purification

Species Reactivity: Human, Mouse

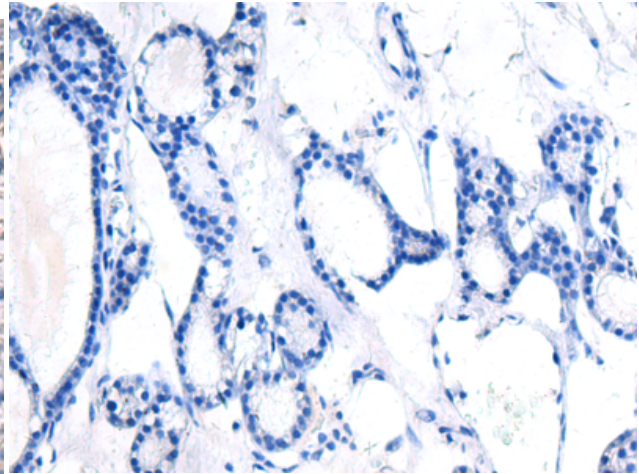
Constituents: PBS (without Mg²⁺ and Ca²⁺), pH 7.4, 150 mM NaCl, 0.05% Sodium Azide and 40% glycerol

Research Areas: Epigenetics and Nuclear Signaling

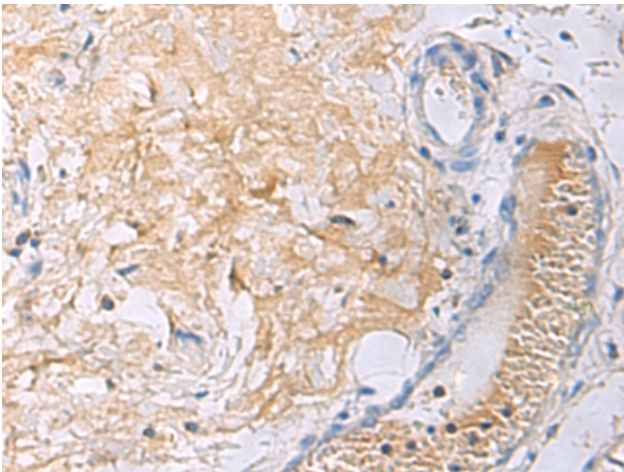
Storage & Shipping: Store at -20°C. Avoid repeated freezing and thawing



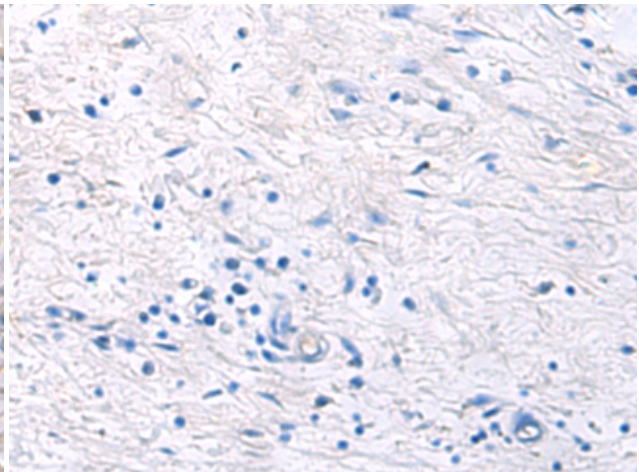
Immunohistochemistry analysis of paraffin embedded Human thyroid cancer using 222178 (HIC1 Antibody) at a dilution of 1/55 (Cytoplasm).



In comparison with the IHC on the left, the same paraffin-embedded Human thyroid cancer is first treated with the synthetic peptide and then with 222178 (Anti-HIC1 Antibody) at dilution 1/55.



The image on the left is immunohistochemistry of paraffin-embedded Human gastric cancer using 222178 (Anti-HIC1 Antibody) at a dilution of 1/55.



In comparison with the IHC on the left, the same paraffin-embedded Human gastric cancer is first treated with synthetic peptide and then with D264177 (Anti-HIC1 Antibody) at dilution 1/55.